



(19) **United States**

(12) **Patent Application Publication** (10) **Pub. No.: US 2005/0040392 A1**

Wu et al.

(43) **Pub. Date:**

Feb. 24, 2005

(54) **RECONFIGURABLE ORGANIC LIGHT-EMITTING DEVICE AND DISPLAY APPARATUS EMPLOYING THE SAME**

(76) Inventors: **Chung-Chih Wu**, Taipei (TW); **Chieh-Wei Chen**, Taipei (TW); **Ting-Yi Cho**, Taipei (TW)

Correspondence Address:
BIRCH STEWART KOLASCH & BIRCH
PO BOX 747
FALLS CHURCH, VA 22040-0747 (US)

(21) Appl. No.: **10/642,745**

(22) Filed: **Aug. 19, 2003**

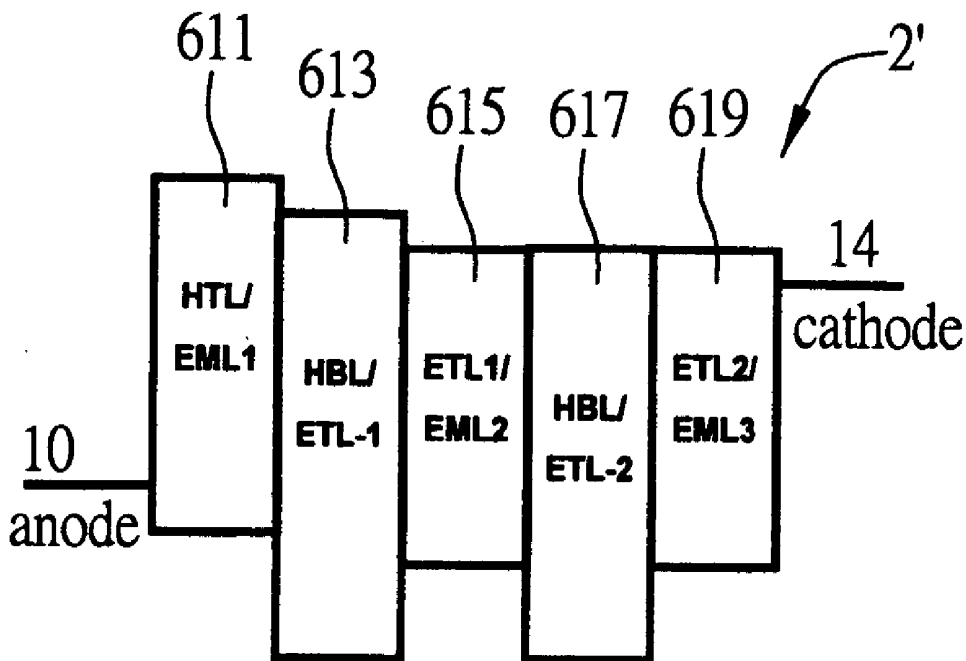
Publication Classification

(51) **Int. Cl.⁷** **H01L 35/24**

(52) **U.S. Cl.** **257/40**

(57) **ABSTRACT**

A reconfigurable organic light-emitting device and the display apparatus employing such organic light-emitting device, wherein the reconfigurable organic light-emitting device comprises at least two organic light-emitting layers and at least one high-energy-gap carrier-blocking layer. The at least one high-energy-gap carrier-blocking layer is formed between each of the organic light-emitting layers. The structure of the reconfigurable organic light-emitting device can be reconfigured through heating, and the reconfigurable organic light-emitting device may thus emit light characteristic of one layer of the at least two organic light-emitting layers, after a bias voltage is applied on the upper electrode and the lower electrode of the reconfigurable organic light-emitting device. The heating may be performed with a built-in resistive heating source, an external heating source or a light-beam. By employing the reconfigurable organic light-emitting device, fixed-pattern, passive-matrix, and active-matrix display apparatus of multi-color or full-color may further be fabricated.



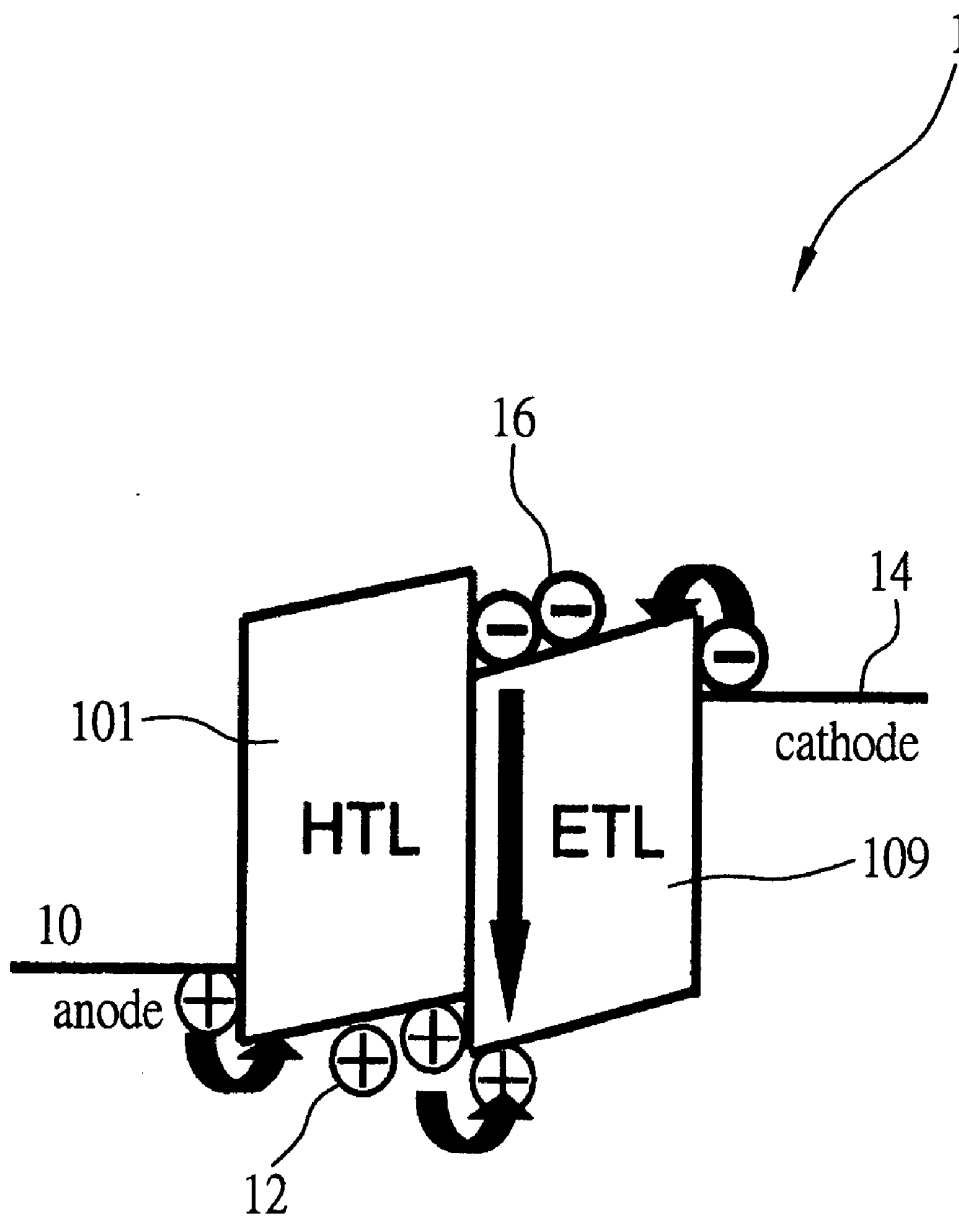


FIG. 1 (PRIOR ART)

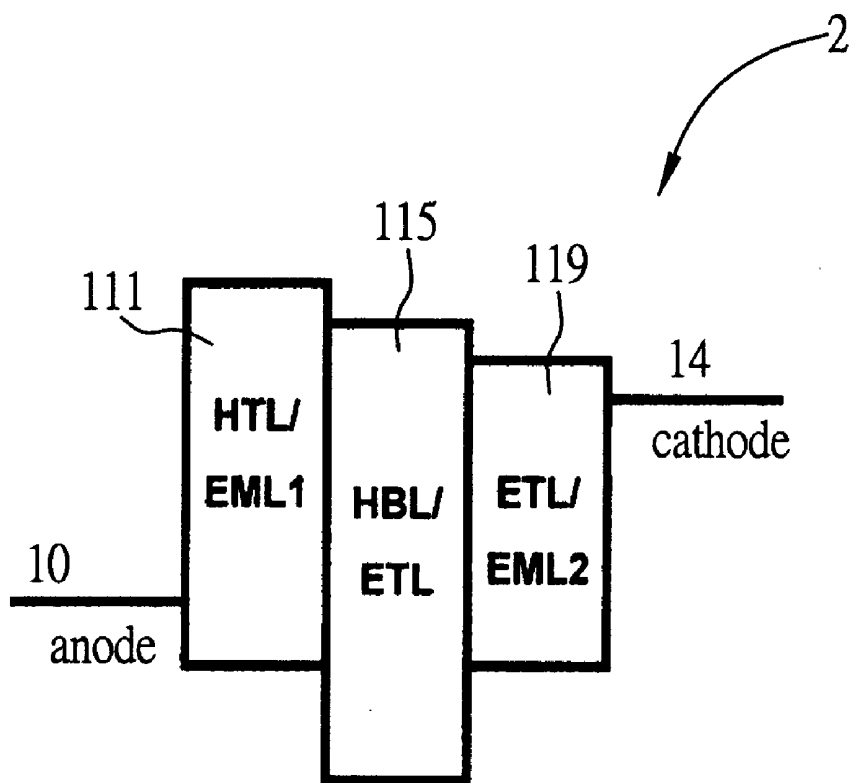


FIG. 2A

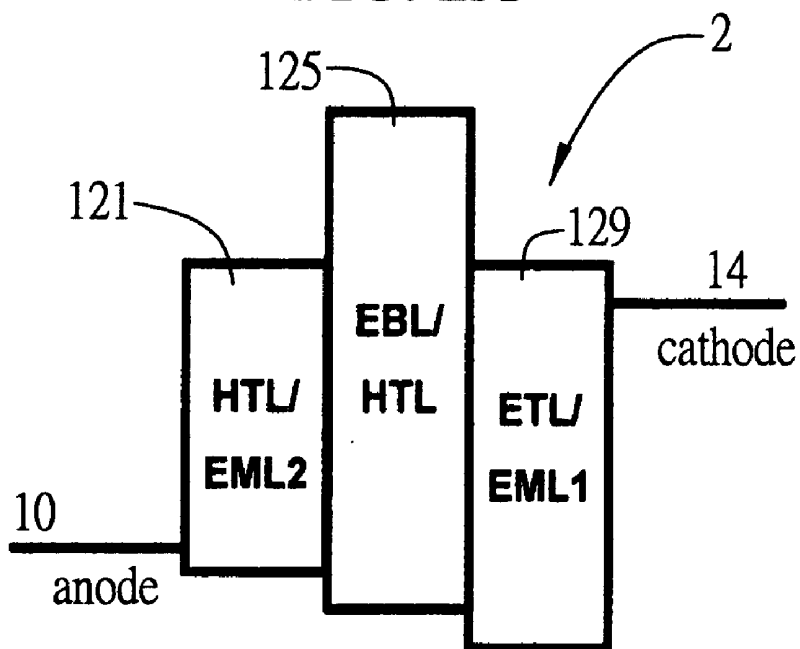


FIG. 2B

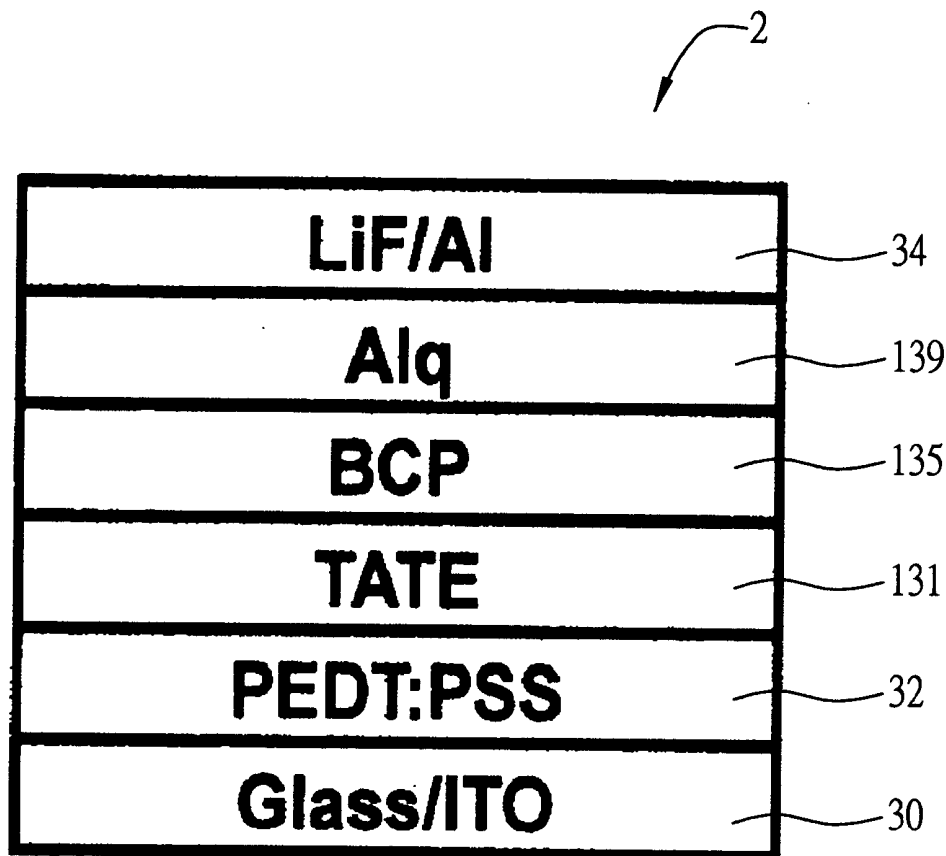
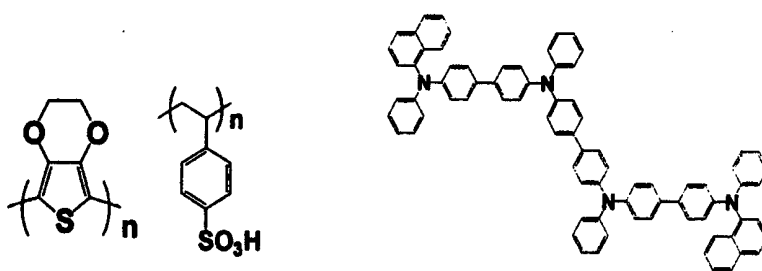
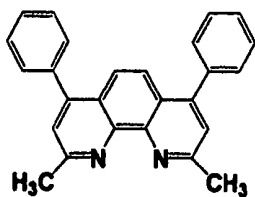


FIG. 3

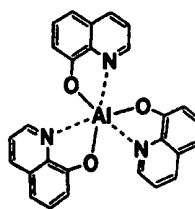


PEDT:PSS
FIG. 4a

TATE
FIG. 4b



BCP
FIG. 4c



Alq
FIG. 4d

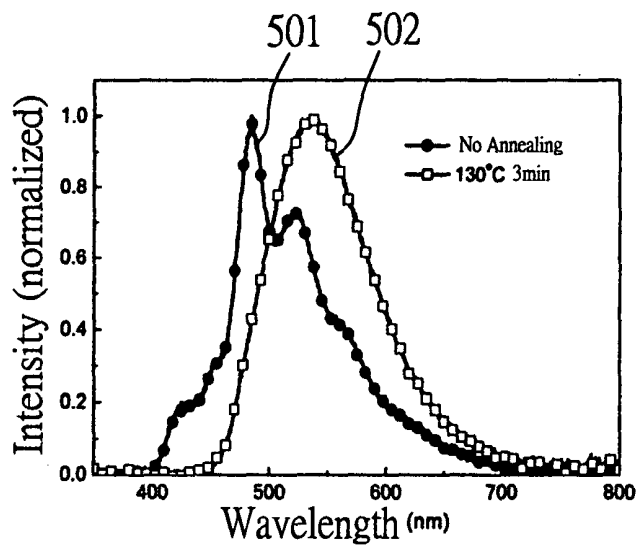


FIG. 5a

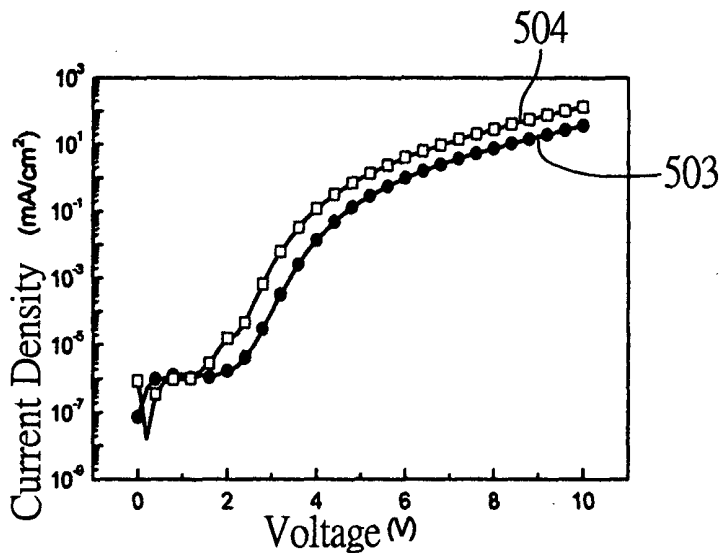


FIG. 5b

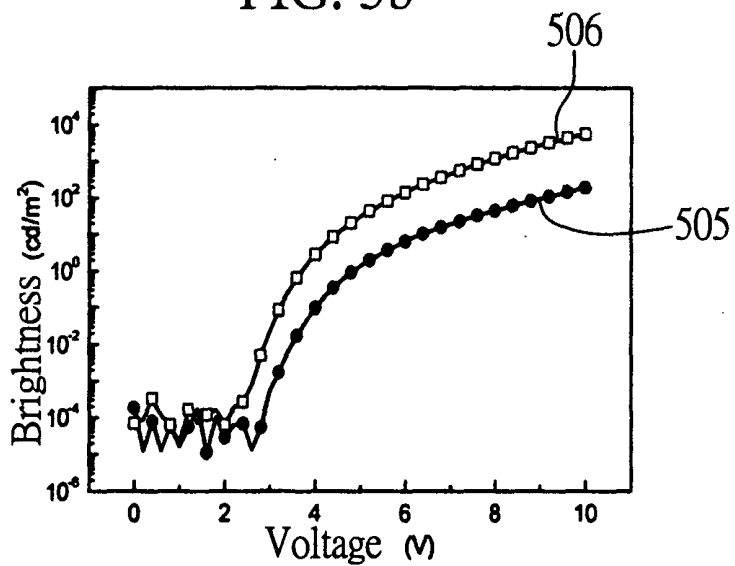


FIG. 5c

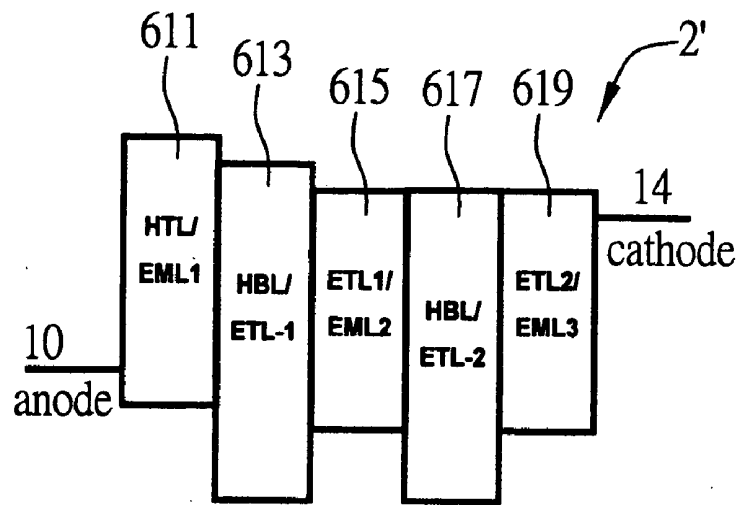


FIG. 6a

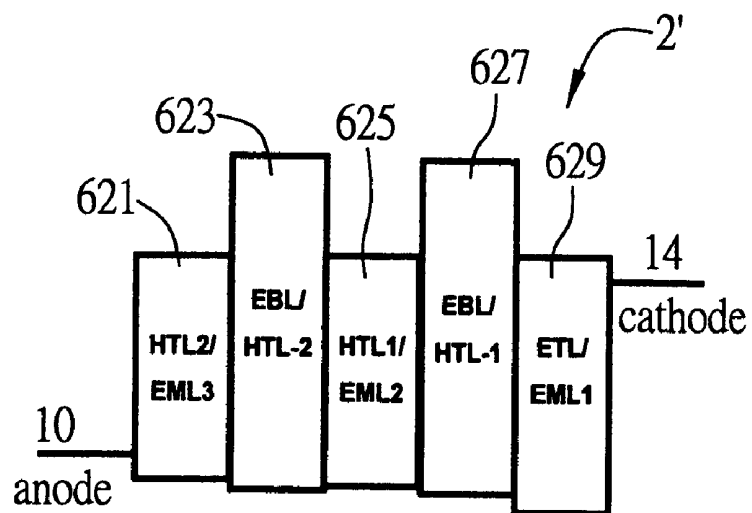


FIG. 6b

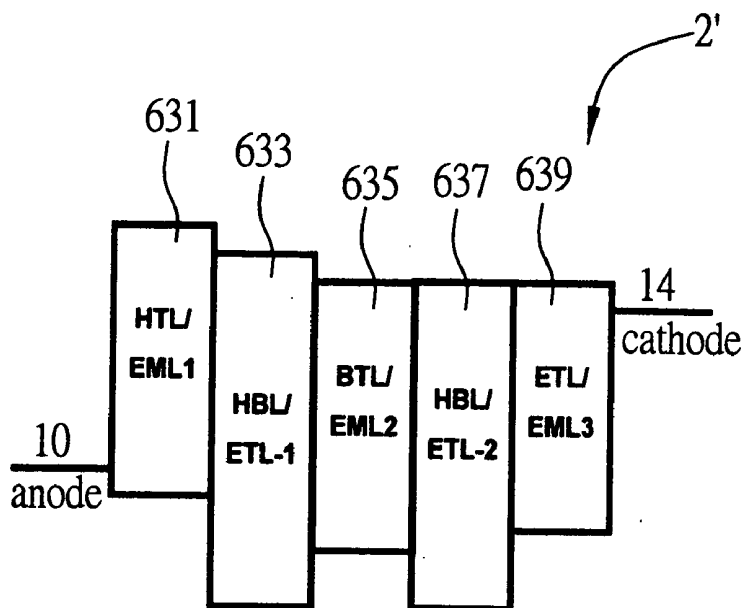


FIG. 6c

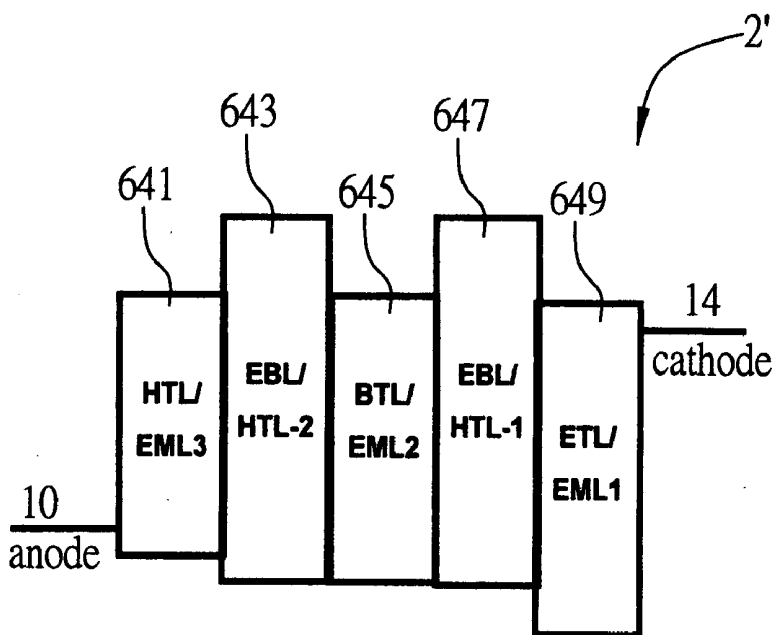


FIG. 6d

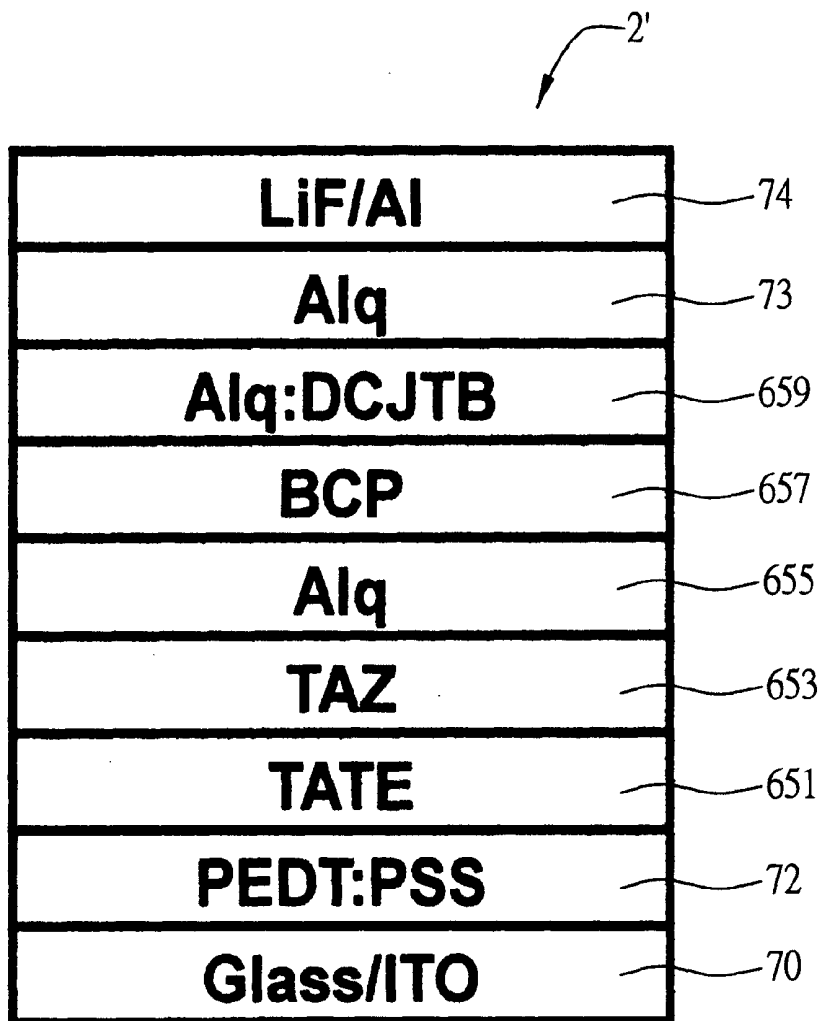
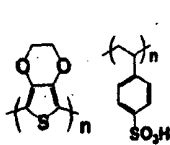
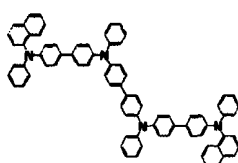


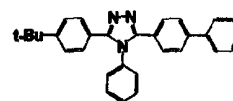
FIG. 7



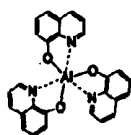
PEDT:PSS
FIG. 8a



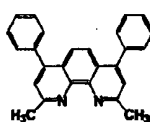
TATE
FIG. 8b



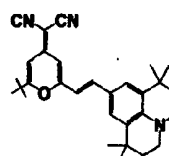
TAZ
FIG. 8c



Alq
FIG. 8d



BCP
FIG. 8e



DCJTb
FIG. 8f

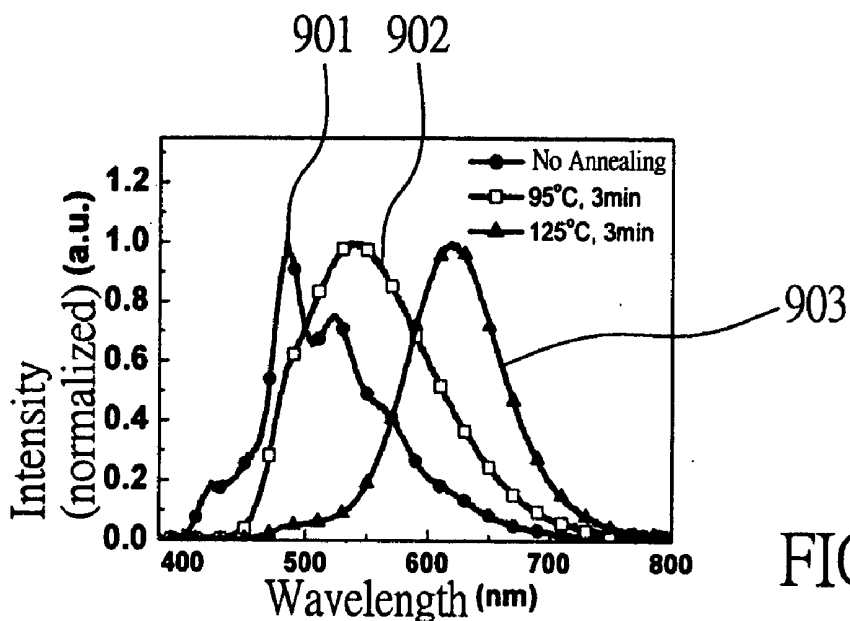


FIG. 9a

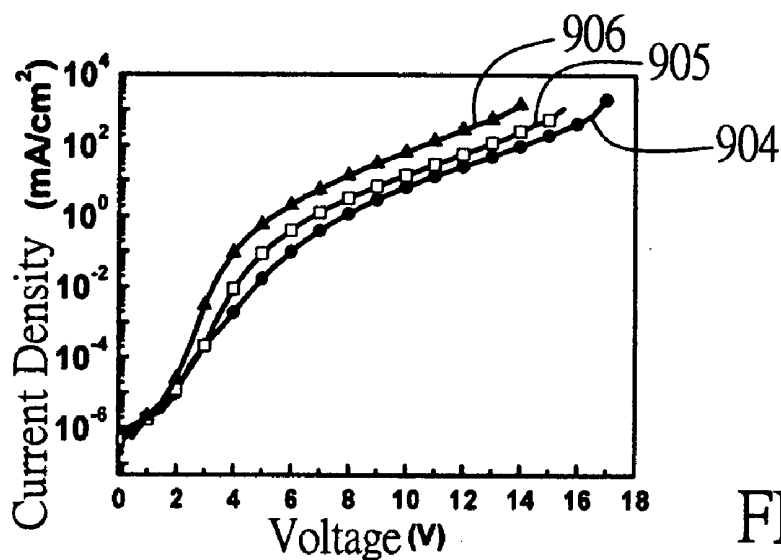


FIG. 9b

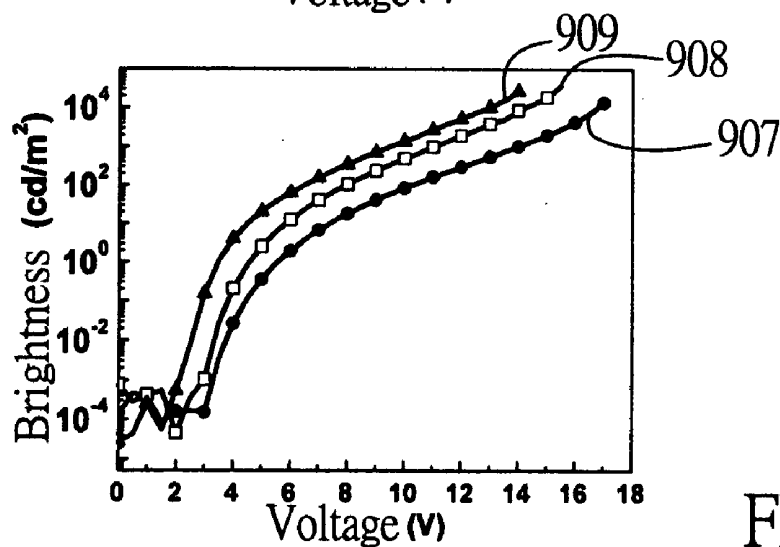


FIG. 9c

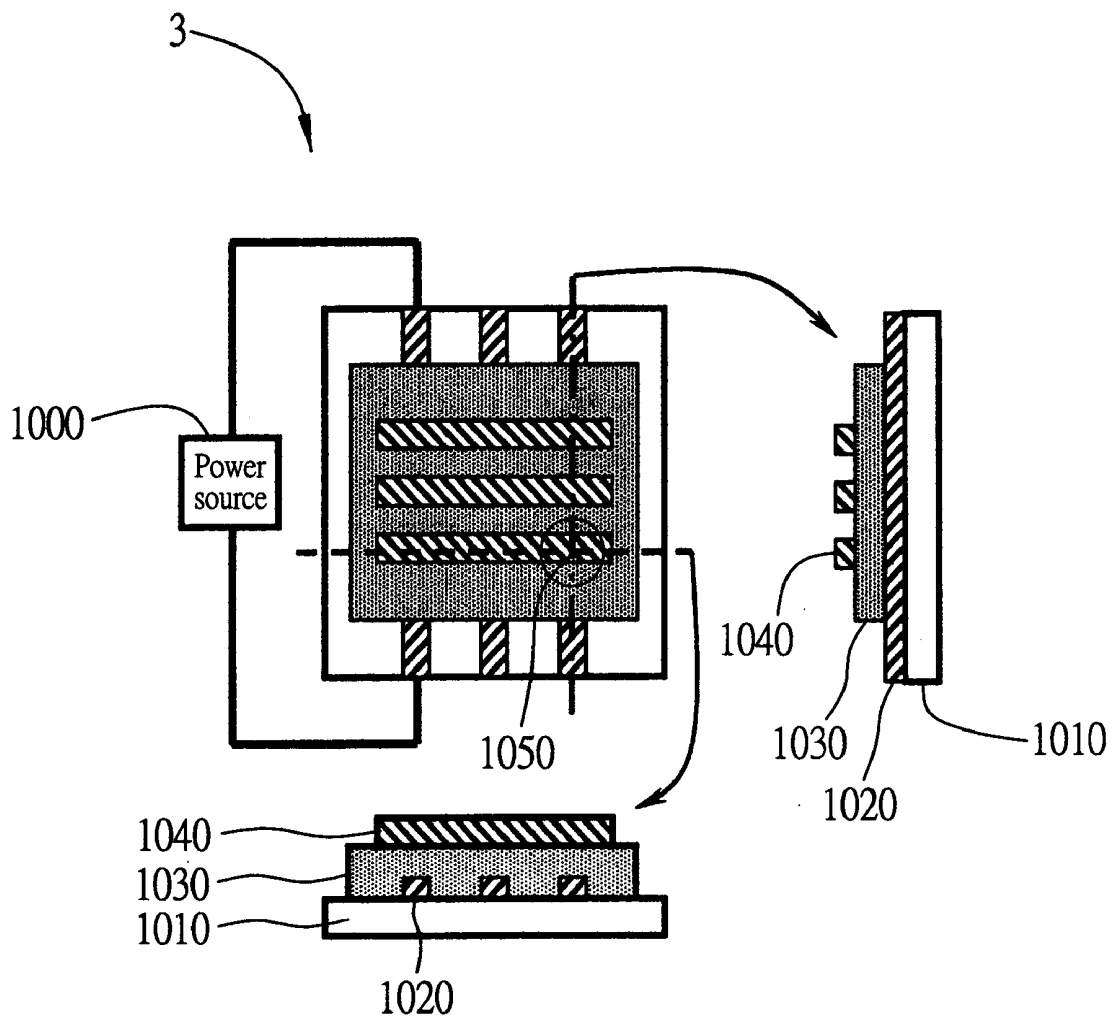


FIG. 10

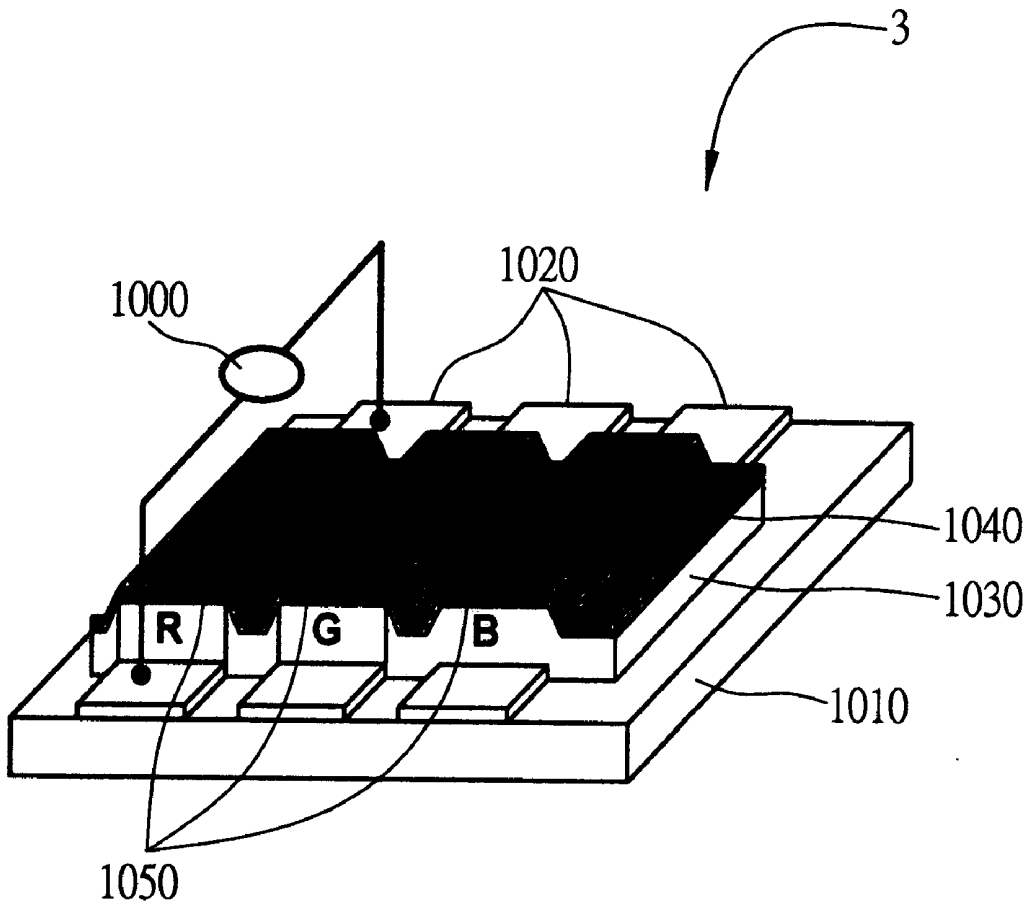


FIG. 11

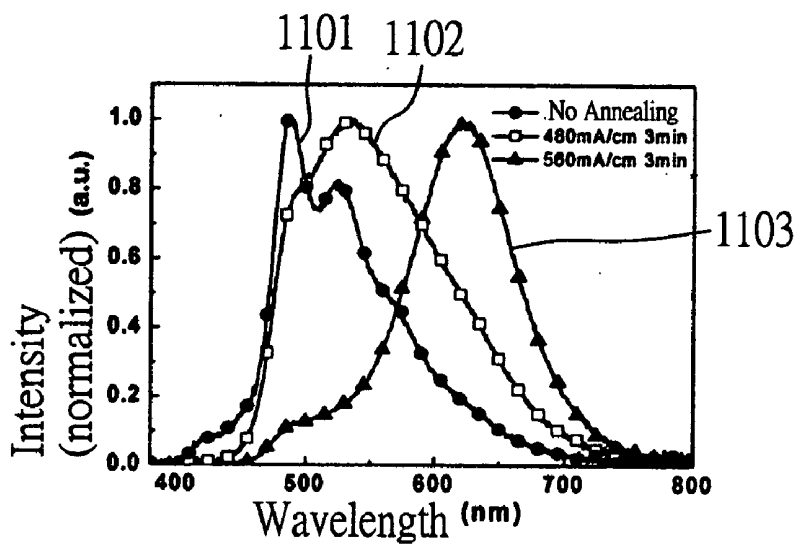


FIG. 12a

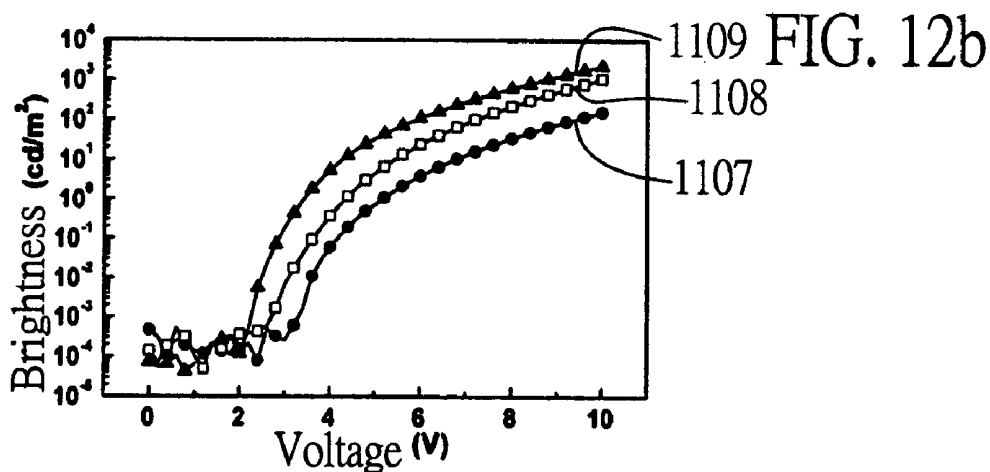
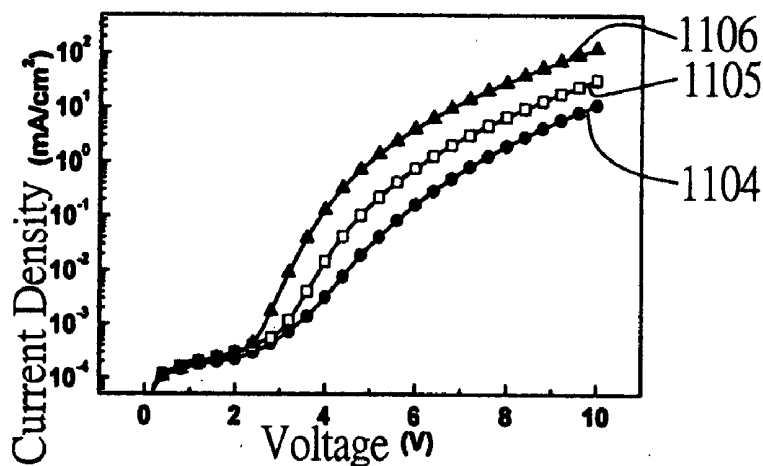


FIG. 12c

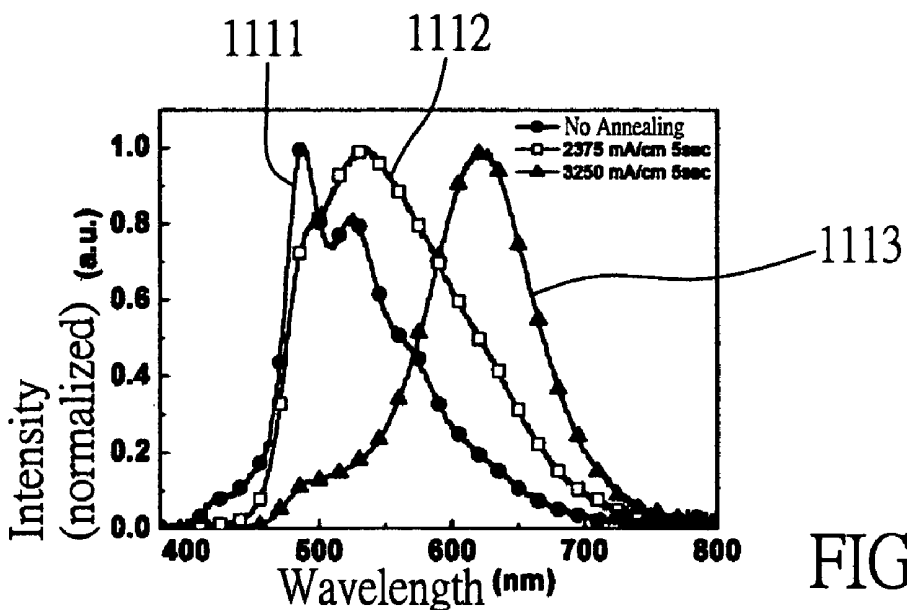


FIG. 13a

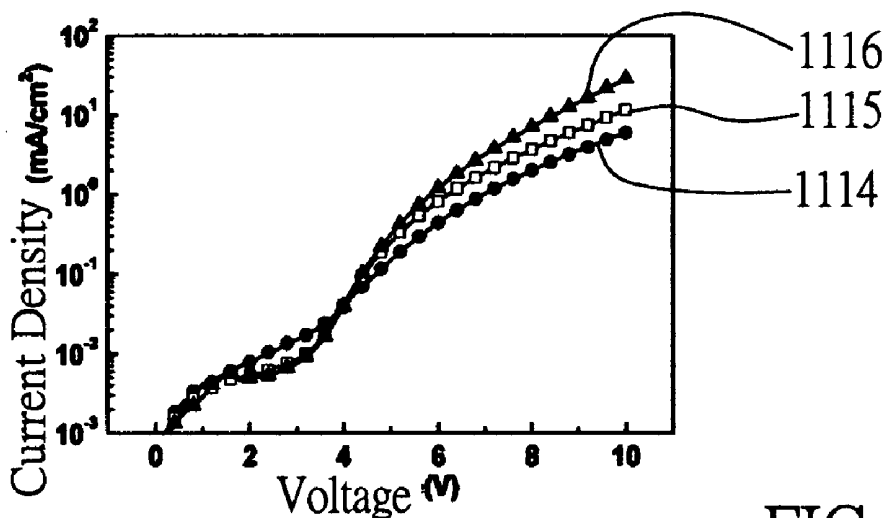


FIG. 13b

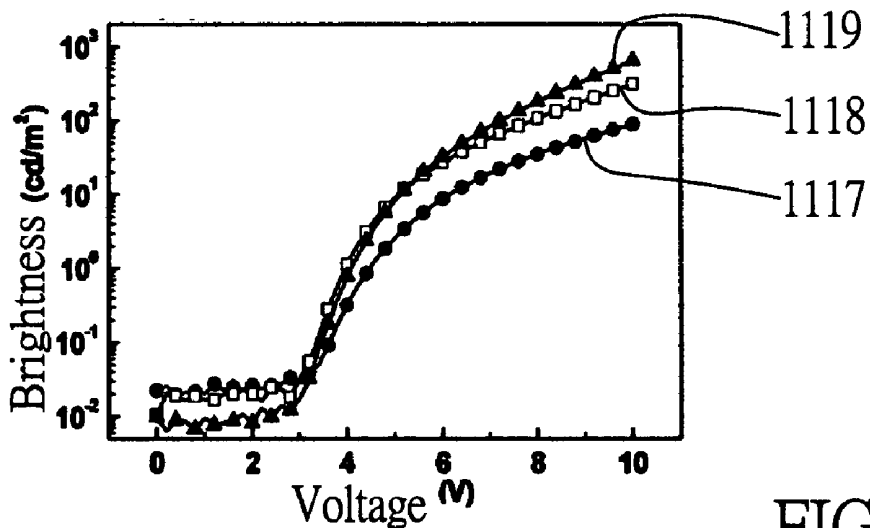


FIG. 13c

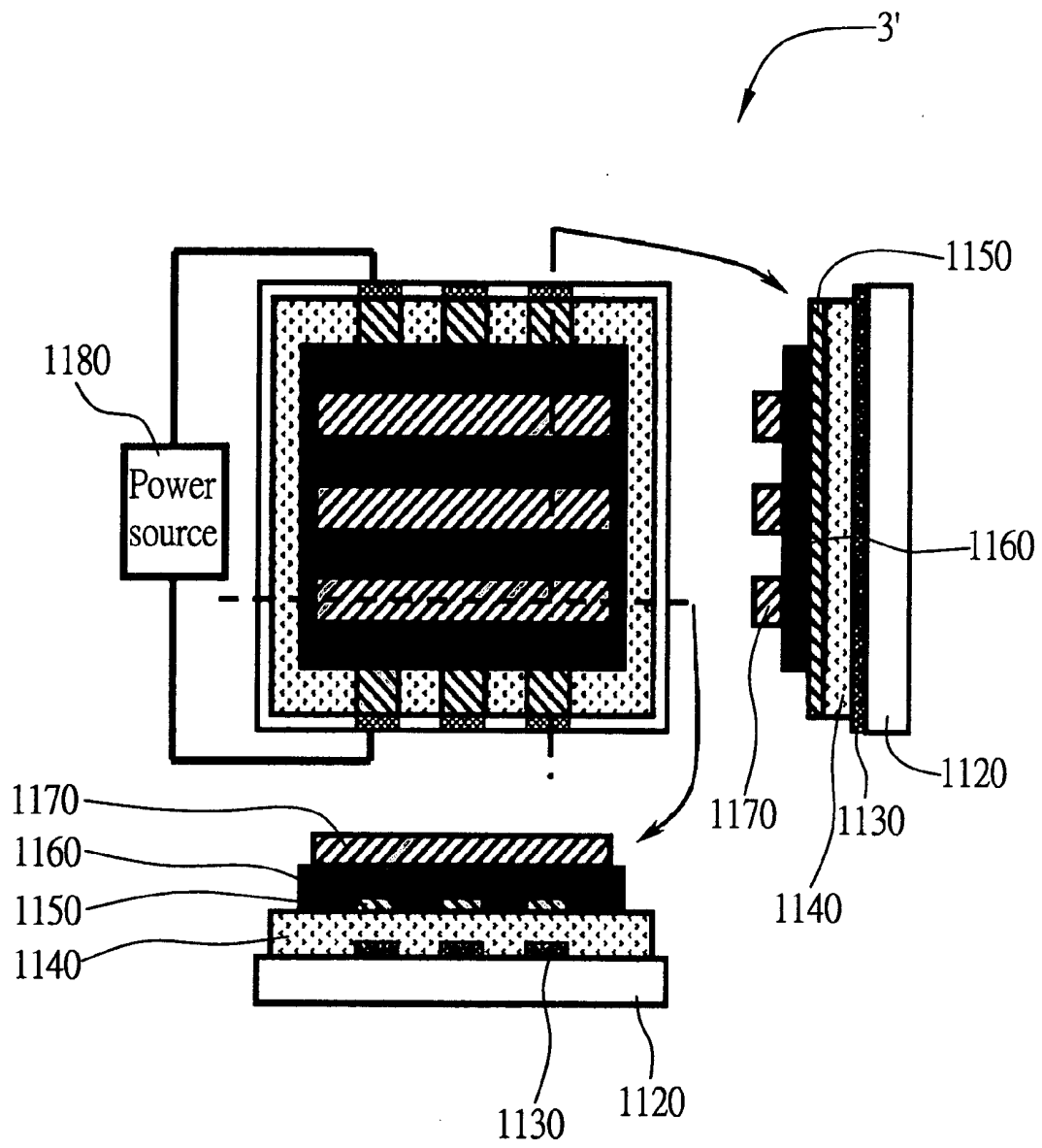


FIG. 14

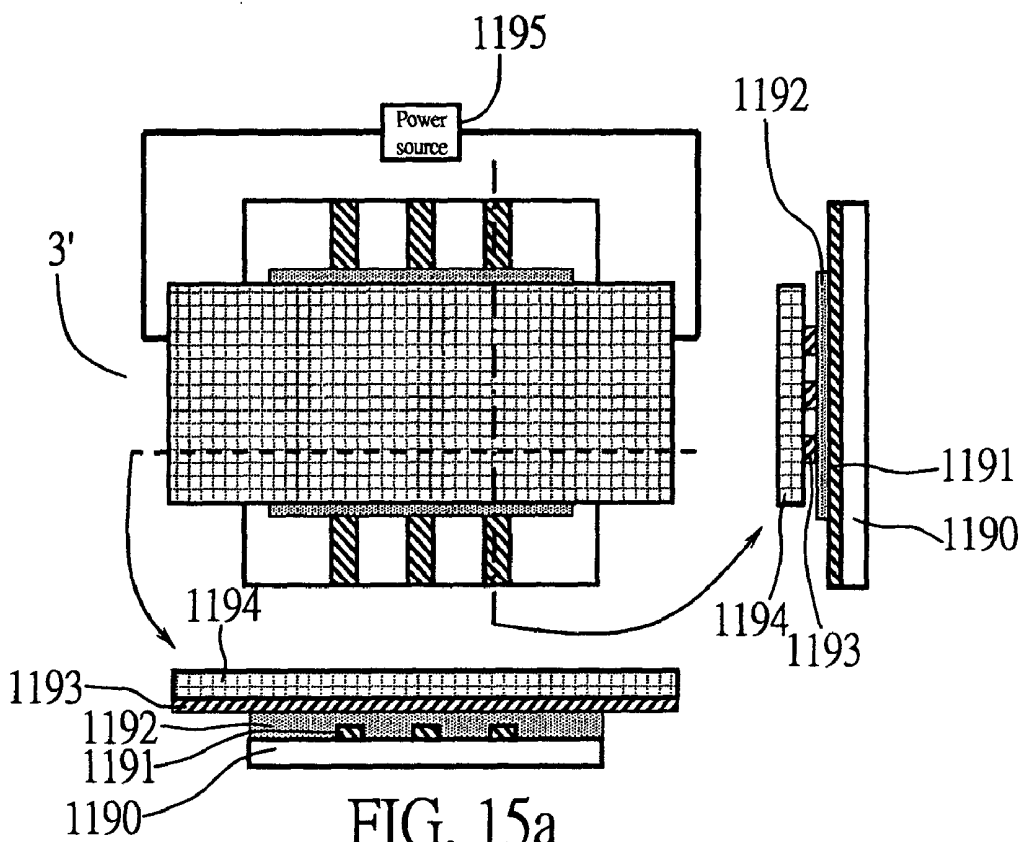


FIG. 15a

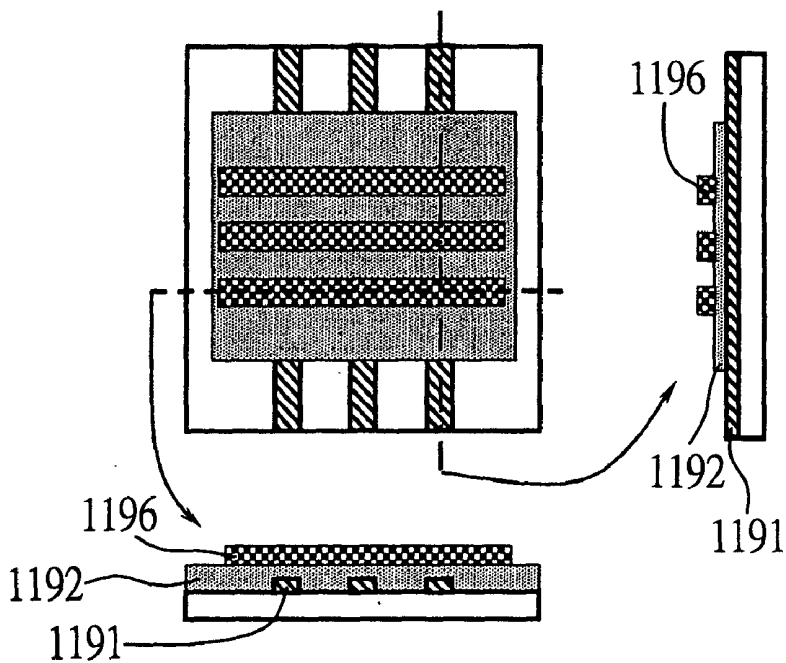


FIG. 15b

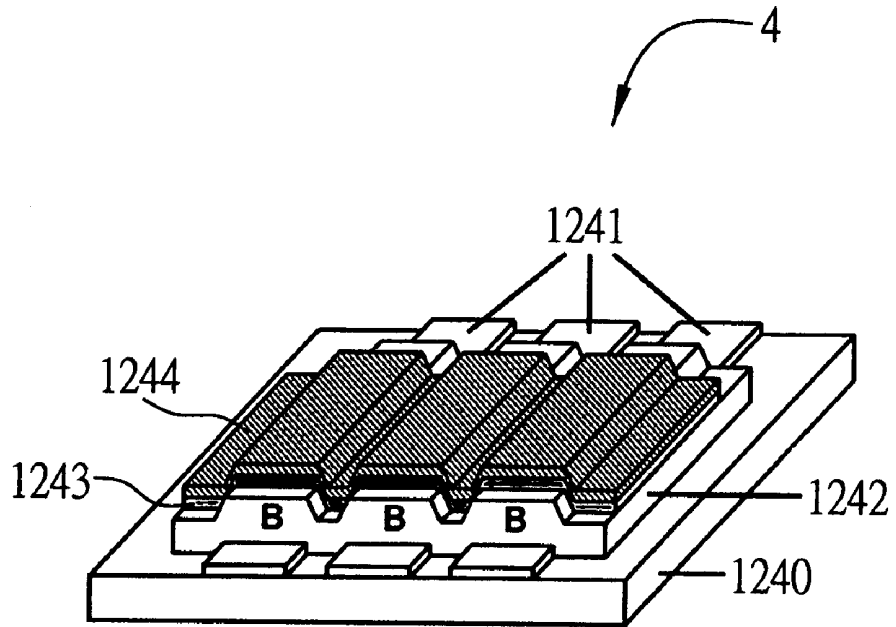


FIG. 16a

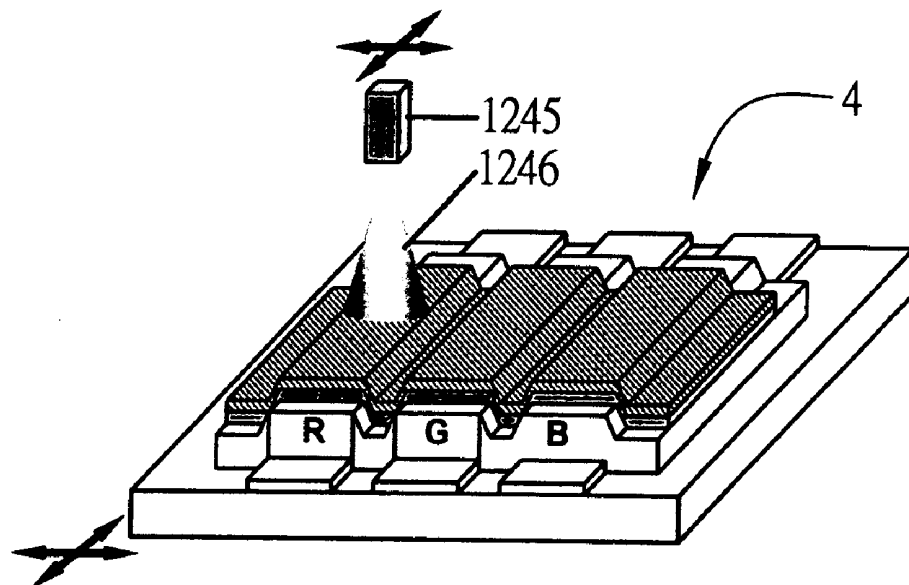


FIG. 16b

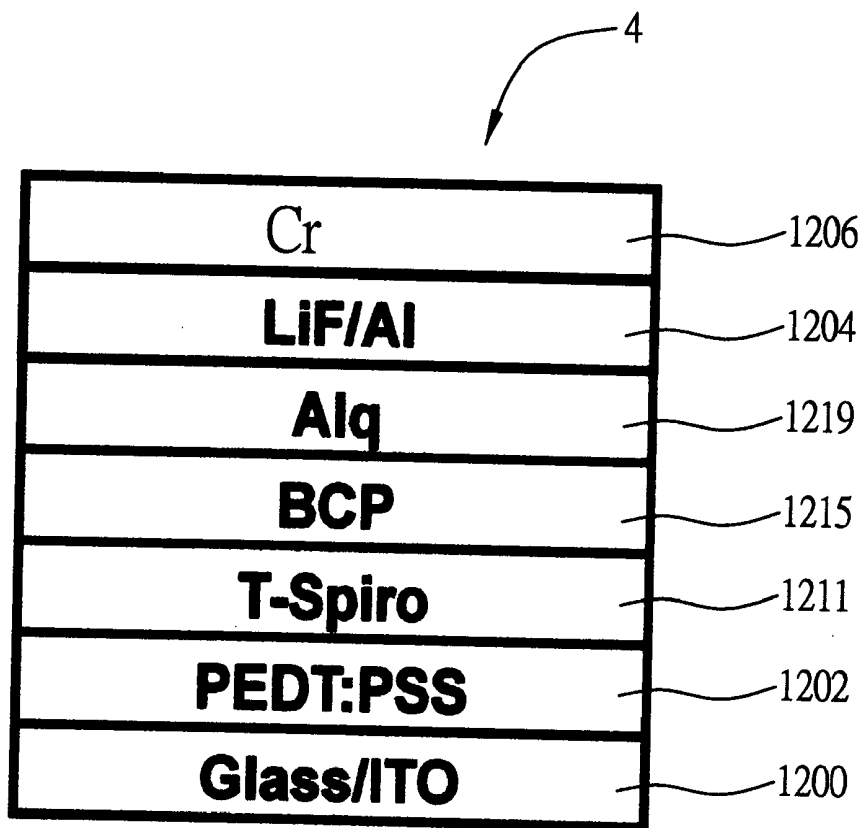
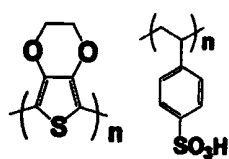
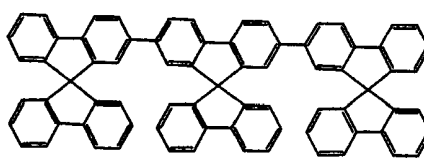


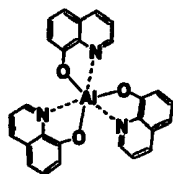
FIG. 17



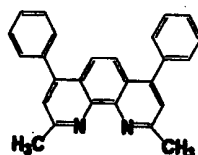
PEDT:PSS
FIG. 18a



T-Spiro
FIG. 18b



Alq
FIG. 18c



BCP
FIG. 18d

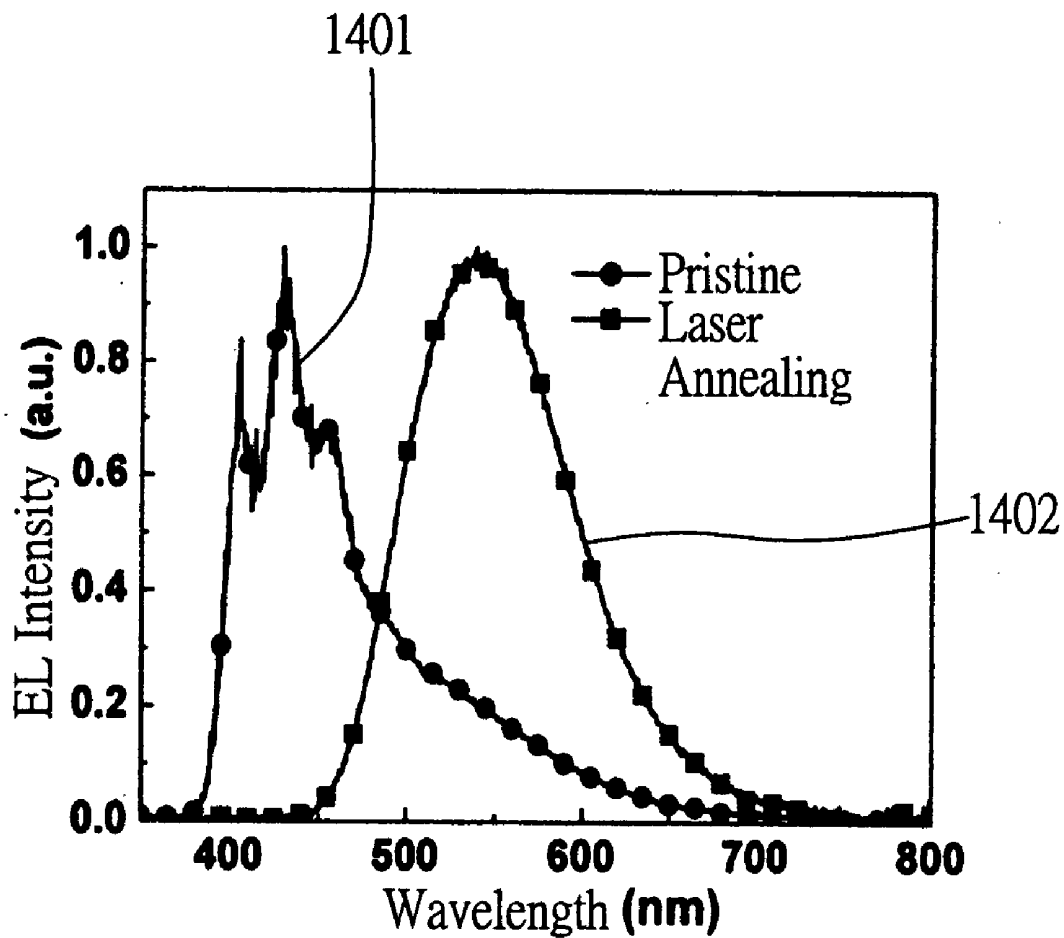


FIG. 19

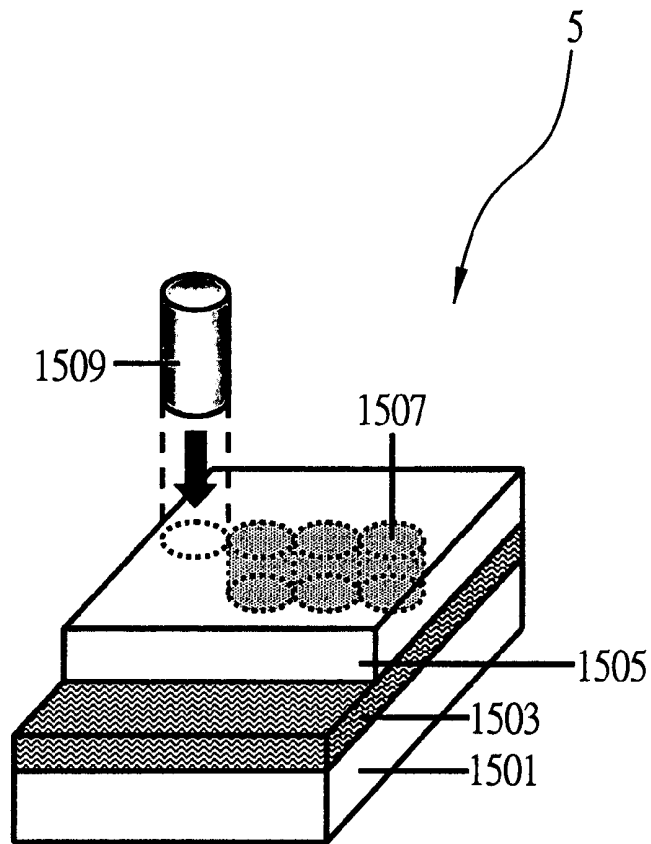


FIG. 20

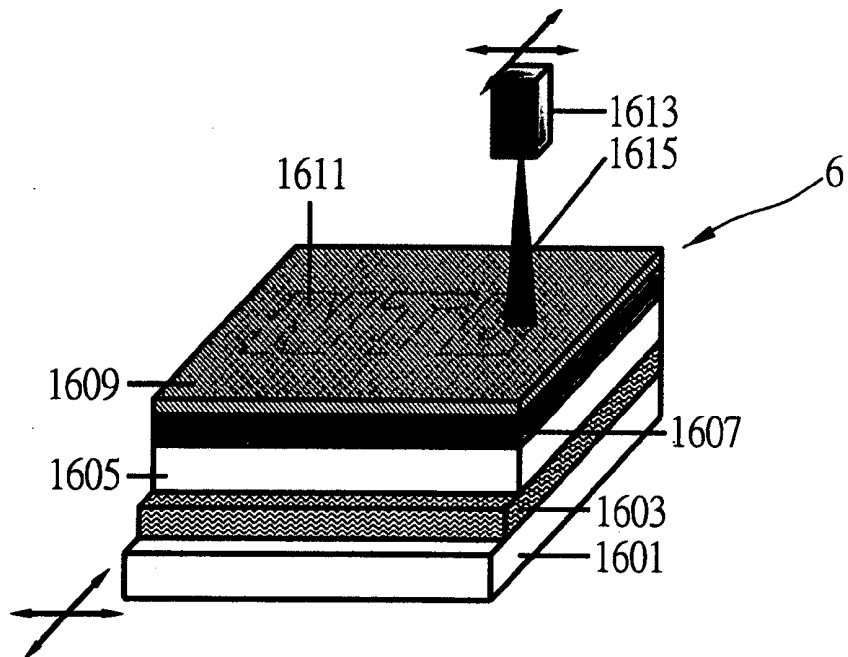


FIG. 21

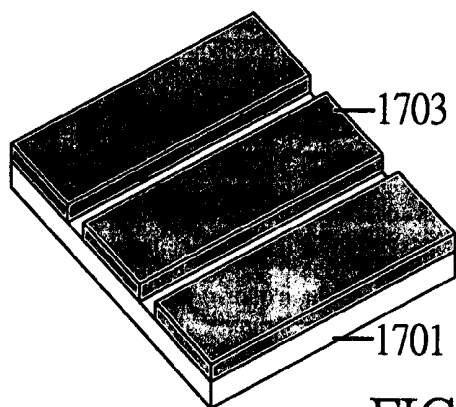


FIG. 22a

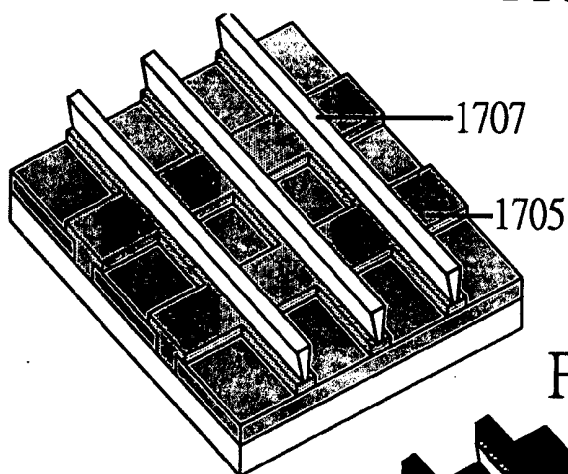


FIG. 22b

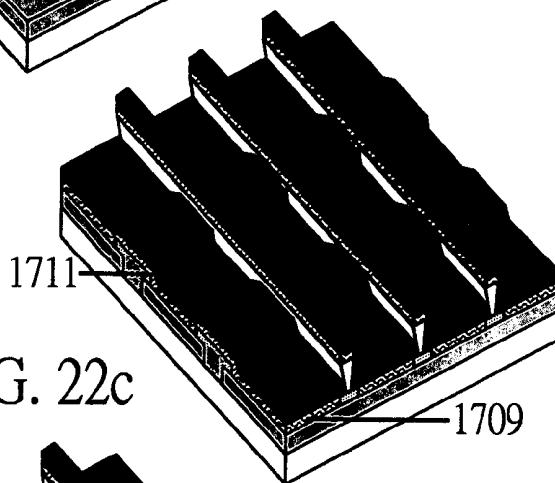


FIG. 22c

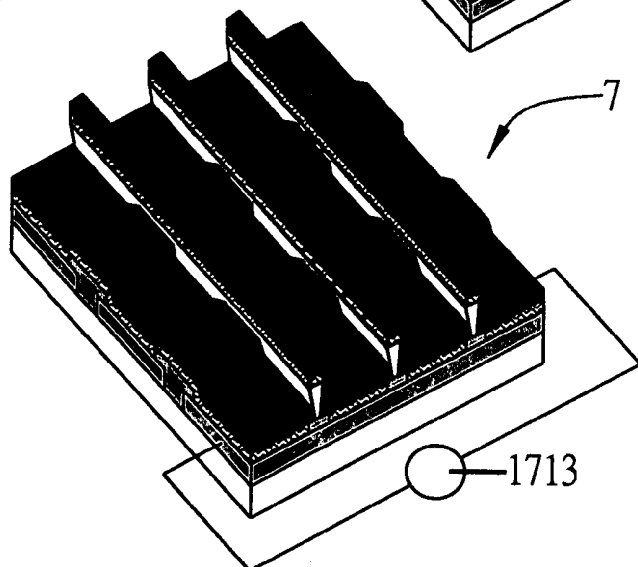


FIG. 22d

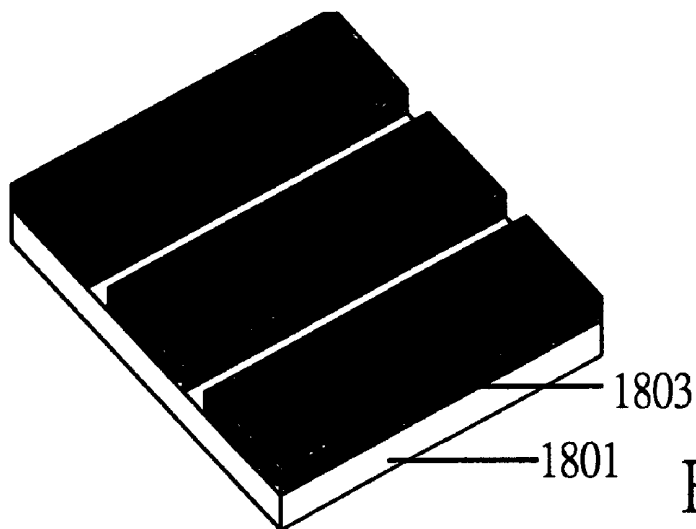


FIG. 23a

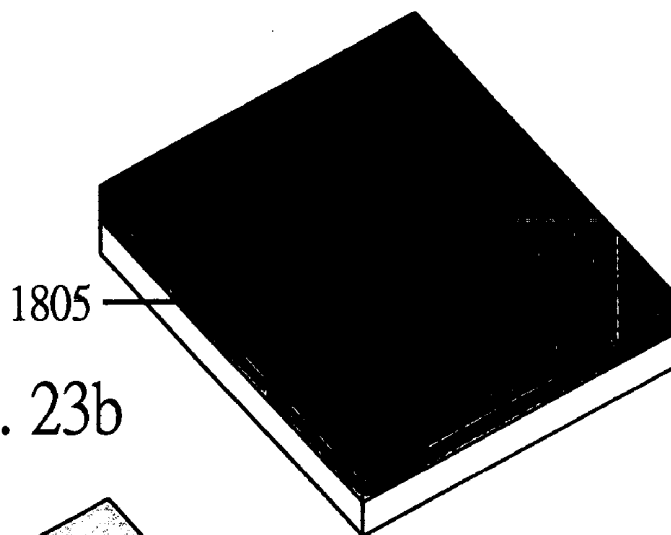


FIG. 23b

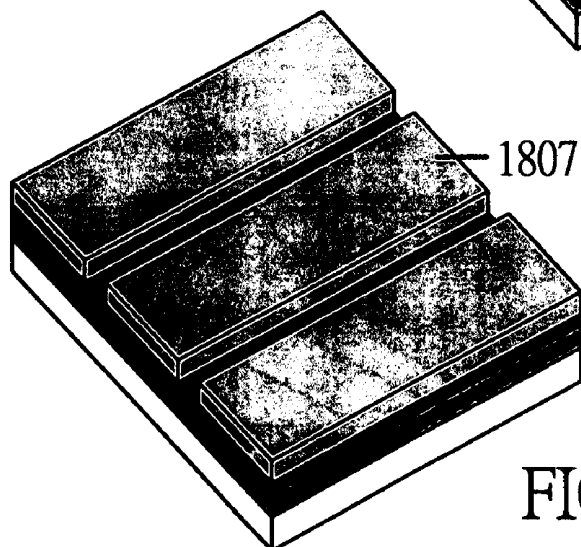
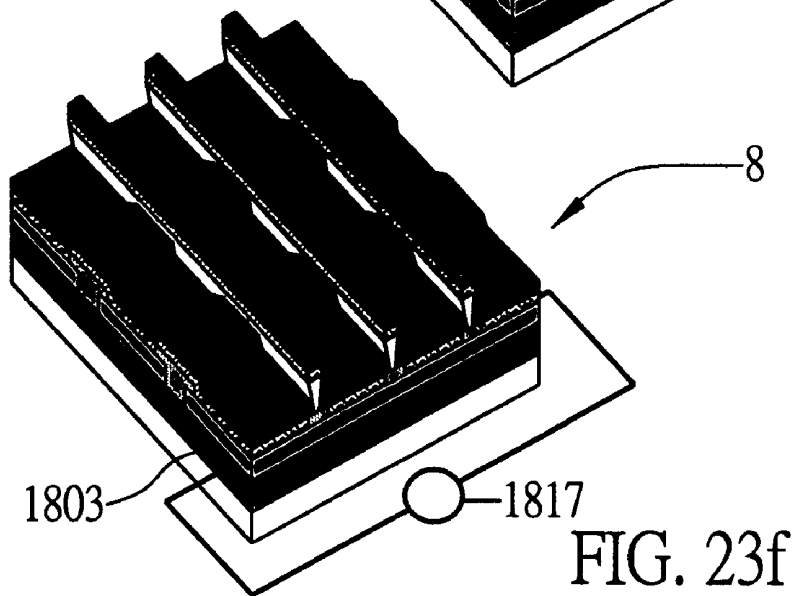
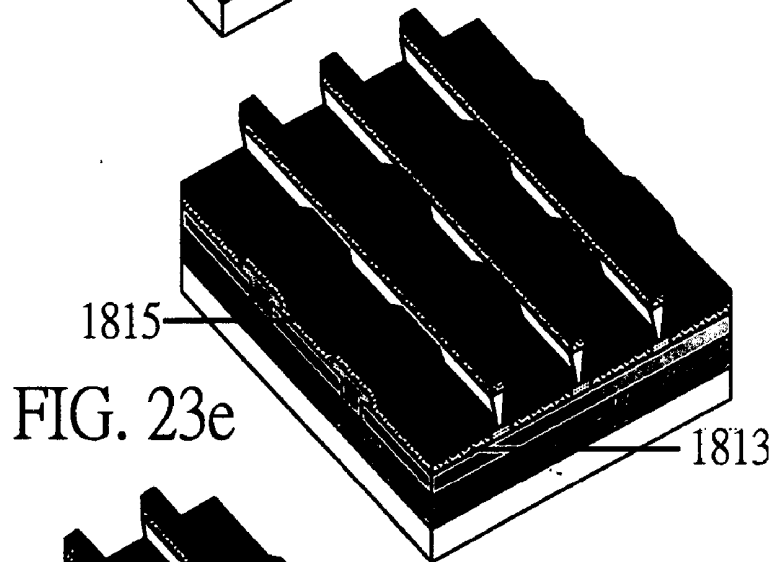
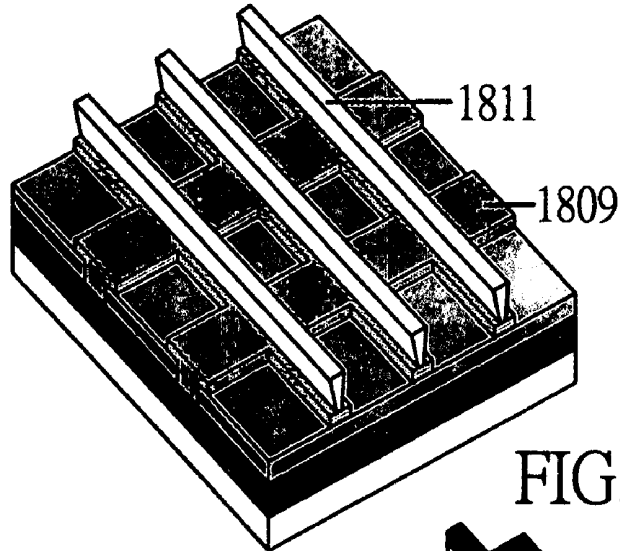


FIG. 23c



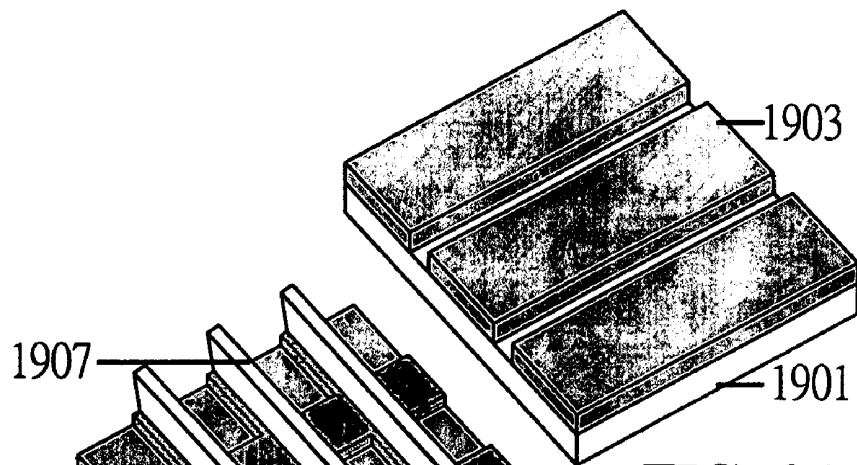


FIG. 24a

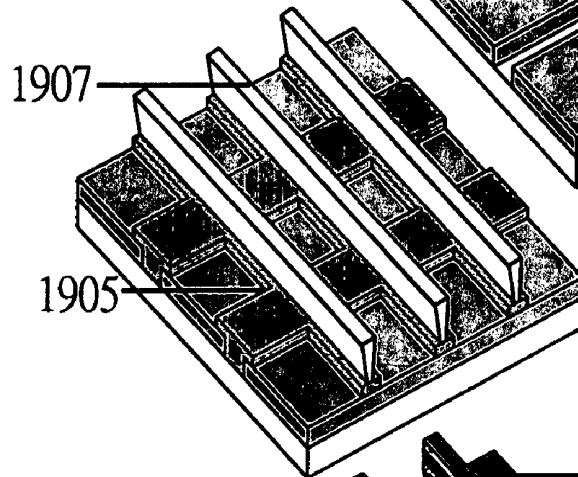


FIG. 24b

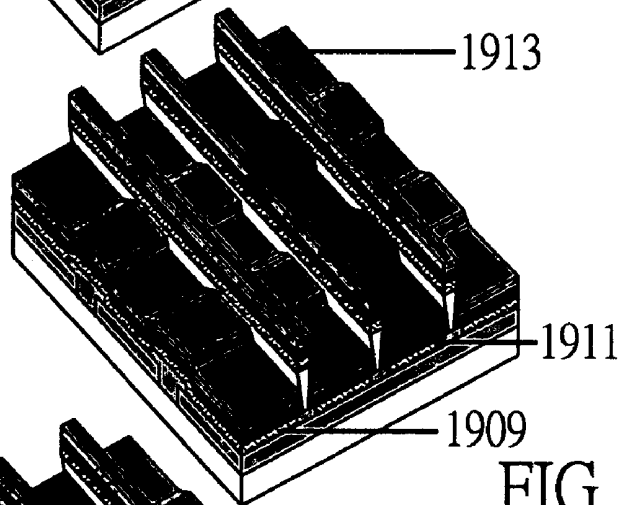


FIG. 24c

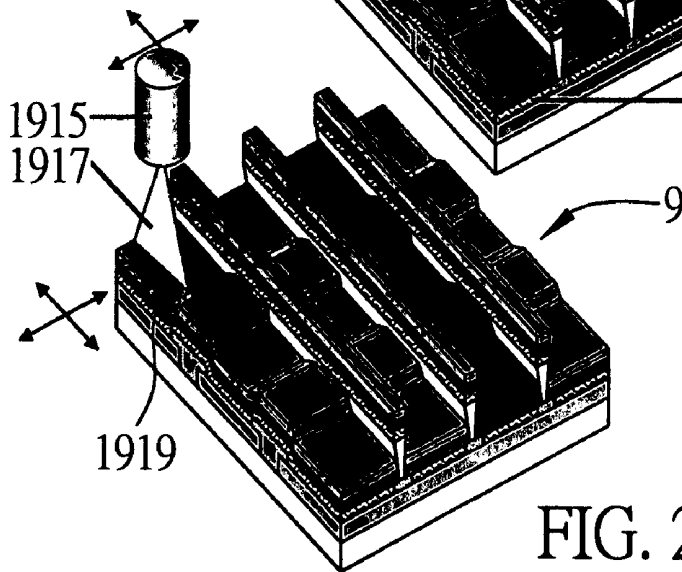


FIG. 24d

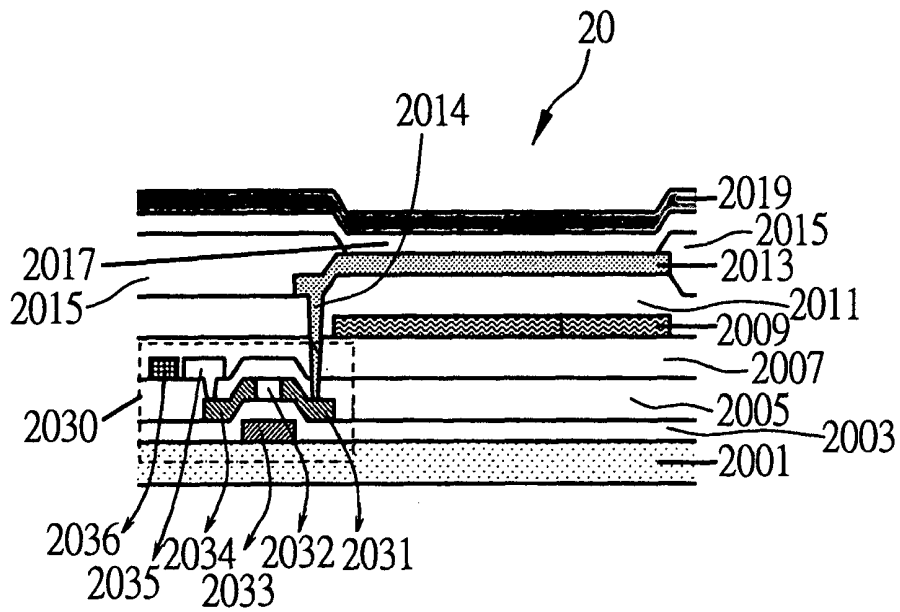


FIG. 25

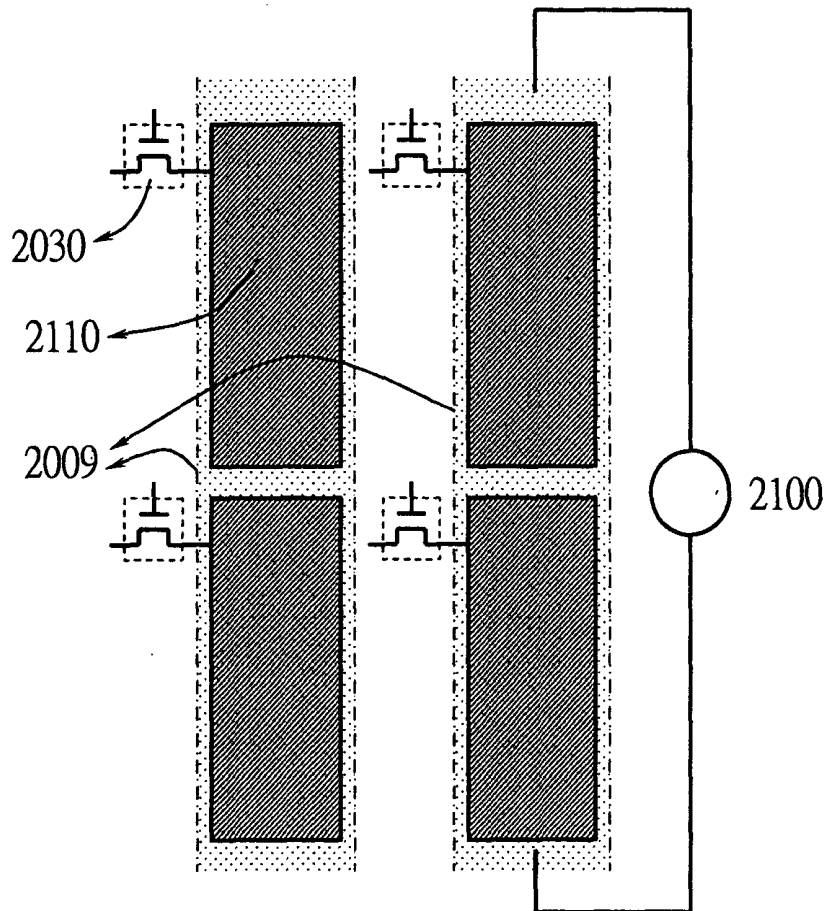


FIG. 26

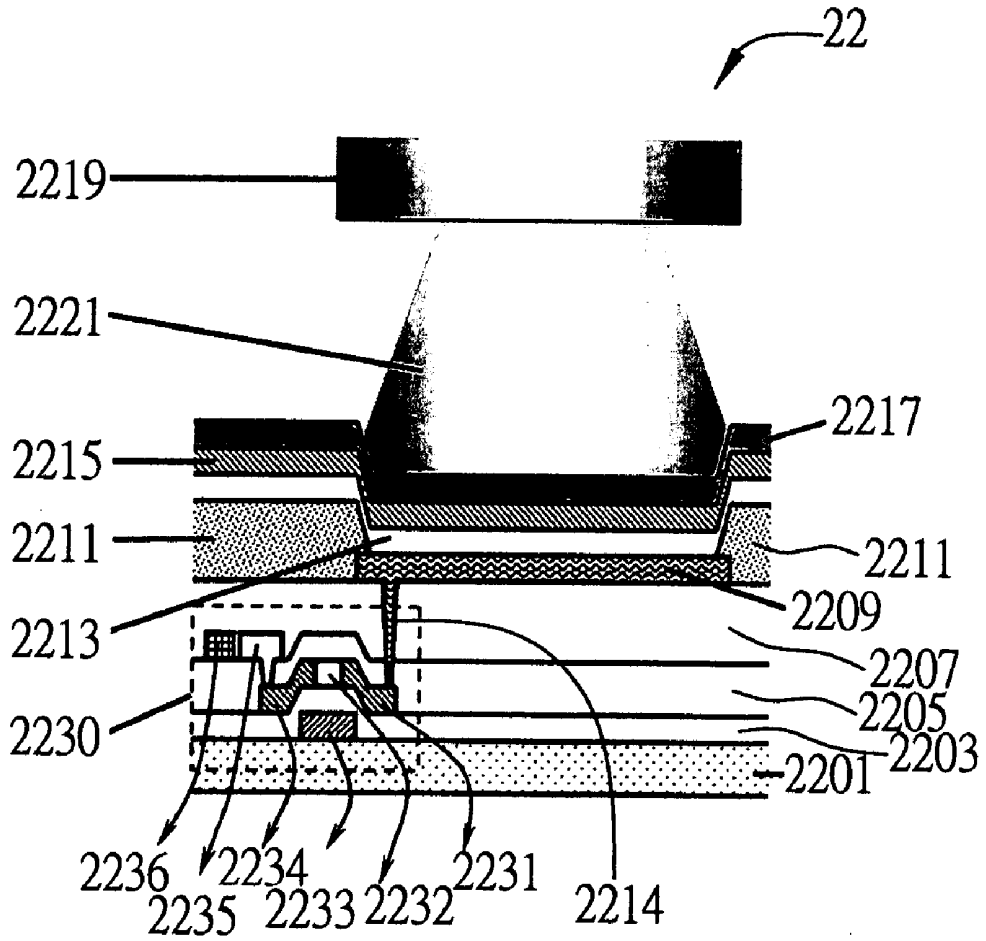


FIG. 27

RECONFIGURABLE ORGANIC LIGHT-EMITTING DEVICE AND DISPLAY APPARATUS EMPLOYING THE SAME

FIELD OF THE INVENTION

[0001] This invention relates to generally organic light-emitting devices and display apparatus which employs the same, and, more specifically, to a reconfigurable organic light-emitting device and a display apparatus which employs the reconfigurable organic light-emitting device.

BACKGROUND OF THE INVENTION

[0002] The earliest organic light-emitting device (OLED) was proposed, in 1963, by Pope et al, who applied a 1000 V voltage to both ends of an anthracene crystal with a thickness of 1 mm and observed light emission. However, the operation voltage was so high that it is not applicable to a flat panel display. The structure and the manufacturing method of the organic light-emitting device nowadays were proposed by C. W. Tang and S. A. VanSlyke of the Eastman Kodak Company. One may manufacture the structure by sequentially depositing non-crystalline thin films of organic materials, with vacuum deposition on a glass substrate that is precoated with a transparent electrode (lower electrode) of Indium Tin Oxide (ITO), and lastly depositing a metal electrode (upper electrode) thereon. The operation voltage of the organic light-emitting device manufactured in accordance with the above method is reduced to within 10 volts, which largely enhances its value in practical use. Also, the vacuum deposition method is suitable for mass production of flat panel displays with large display areas. Furthermore, since the organic light-emitting device has the features of fast response, self-emitting and low process temperature, the OLED has evolved to play a significant role in the industry of flat panel displays.

[0003] Referring to FIG. 1, the energy level structure for each layer of the conventional two-layer organic light-emitting device 1 is illustrated. As shown in the figure, the organic light-emitting device 1 comprises: an anode 10, a cathode 14, a hole-transport layer (HTL) 101, and an electron-transport layer (ETL) 109. Holes 12 and electrons 16 are injected into the HTL 101 and the ETL 109, respectively, via the anode 10 and the cathode 14. When the electrons 16 and the holes 12 drift respectively to the junction between the HTL 101 and the ETL 109, the electrons 16 and the holes 12 combine to form excitons and then emit light. However, such organic light-emitting device has a fixed structure. Once it is fabricated, the structure may no longer be changed. Thus this kind of organic light-emitting device cannot emit light of various colors but only light of one single color.

[0004] Since organic light-emitting device is one of the major components of a flat panel display, whether the flat panel display can display in full-color depends heavily on whether the organic light-emitting device is capable of emitting full-colors. However, after the conventional organic light-emitting device is fabricated, its emission spectrum and device characteristics are fixed. To enable the flat panel display to display in full-color, one of the following methods must be employed: (1) fabricating organic light-emitting devices that emit red, green and blue light, respectively, on a substrate so as to form an array of color

pixels; (2) fabricating an array of organic light-emitting devices that emits white light or single-color light on one substrate, and incorporating a color control or conversion array previously fabricated on the same or another substrate so as to achieve a full-color display.

[0005] In order to achieve a full-color display by the aforementioned method (1), Nagayama et al. disclosed a precise shadow-mask alignment method in U.S. Pat. No. 5,701,055, U.S. Pat. No. 5,742,129, U.S. Pat. No. 5,952,037 and U.S. Pat. No. 6,373,182 B1. The precise shadow-mask alignment method is used for fabricating organic light-emitting device of small molecules in high vacuum. In order to fabricate independent organic light-emitting devices that emit red, green and blue light on the same substrate in sequence, one may carry it out by the precise shadow-mask and alignment method in a vacuum or vapor deposition process. The full-color display is achieved by vacuum depositing organic light-emitting devices with different structures that emit different colors in various regions. However, the employment of this method would encounter problems such as shadow-mask alignment errors, vapor deposition shadowing errors during vapor deposition, difficulties in fabricating shadow masks with small openings, insufficient mechanical strength in large-area shadow masks, and the cleaning of the masks. These problems will reduce the resolutions and yields of the display fabricated with this method.

[0006] In order to achieve a full-color display by the aforementioned method (1), Wolk et al. disclosed a method of thermal transfer of organic materials in U.S. Pat. No. 6,114,088. The method of thermal transfer of organic materials comprises fabricating a layer of organic material on a substrate having a light-to-heat conversion layer, and locally increasing the temperature on the light-to-heat conversion layer by shining light thereon, so as to change the adhesion between the interfaces of different materials corresponding to the temperature change, and to induce thermal transfer. The locally heated region of the organic material layer is then transferred from the original substrate to the substrate for display fabrication. In order to fabricate a full-color display, the organic material layers of red, green and blue colors are sequentially transferred to different pixel locations of the substrate. However, the employment of this method would encounter the problems of complicated manufacturing processes and unsatisfactory yield of the fabricated displays.

[0007] In order to achieve a full-color display by the aforementioned method (2), one could also make only organic light-emitting device that emits white light for the entire display. The full-color is achieved by using the color filter array of red, green and blue colors fabricated thereon so as to filter out different colors in various pixel regions of the display (Ref. Kido et al, Science 267, 1332 (1995)). However, the intensity of the light obtained through the color filter, in accordance with this method, would lose more than two thirds of that of the white light emitted by the organic light-emitting device. Thus, the light-emitting efficiency would be largely reduced if the display were fabricated with this method.

[0008] In order to achieve a full-color display by the aforementioned method (2), Eida et al. disclosed an apparatus of organic light-emitting device capable of emitting

multi-colors in U.S. Pat. No. 5,909,081. For the entire display, one makes only the organic light-emitting device emitting blue/ultraviolet light. By means of a color conversion array made by phosphorescent or fluorescent material that absorbs blue/ultraviolet light, the blue/ultraviolet light may be converted to blue, green or red light. However, the display of the organic light-emitting device fabricated with this method would encounter the problem of energy conversion efficiency due to the light conversion layer.

SUMMARY OF THE INVENTION

[0009] To solve the above mentioned problems, the primary objective of the present invention is to provide a reconfigurable organic light-emitting device, which is applicable to the fabrication of flat panel display and is capable of simplifying the manufacturing process of multi-color/full-color displays.

[0010] Another objective of the present invention is to provide a reconfigurable organic light-emitting device, the internal structure of which is reconfigurable by means of heating so as to control the color emitted by the reconfigurable organic light-emitting device.

[0011] In addition, a further objective of the present invention is to employ the reconfigurable organic light-emitting device to fabricate a full-color or multi-color display apparatus. The full-color or multi-color display apparatus may be a fixed-pattern display apparatus, a passive-matrix display apparatus or an active-matrix display apparatus.

[0012] In order to achieve the above and other purposes, the reconfigurable organic light-emitting device of the present invention comprises at least two organic light-emitting material layers and at least one higher-energy-gap carrier-blocking layer. Each of the at least one-high-energy-gap carrier-blocking layer is inserted between each two of the at least two organic light-emitting layers. Each of the at least one high-energy-gap carrier-blocking layer has its own glass transition temperature, and the temperature of each of the at least one high-energy-gap carrier-blocking layer is lower than that of each of the at least two organic light-emitting material layers. When a bias voltage is applied on the reconfigurable organic light-emitting device via an upper electrode and a lower electrode, the organic light-emitting layer in the reconfigurable organic light-emitting device with the shortest emission wavelength may emit light of its characteristic spectrum. The reconfigurable organic light-emitting device may be heated so as to reconfigure its structure, the organic light-emitting layer in the reconfigurable organic light-emitting device with the second shortest light emission wavelength may emit light of its characteristic spectrum. By continuing the heating process on the reconfigurable organic light-emitting device, the emission color of the reconfigurable organic light-emitting device may sequentially change until reaching the characteristic spectrum of the organic light-emitting material with the longest emission wavelength.

[0013] The aforementioned heating means may be realized by fabricating a patterned resistive heating electrode on the device substrate, or by using a patterned external heating source. Additionally, the heating means may also be realized by first fabricating a light-to-heat conversion layer on the reconfigurable organic light-emitting device and then shining a light-beam on the light-to-heat conversion layer so as

to accomplish the heating process of the reconfigurable organic light-emitting device.

[0014] The reconfigurable organic light-emitting device of the present invention is applicable to the multi-color or full-color fixed-pattern display apparatus, passive-matrix display apparatus or active-matrix display apparatus.

[0015] The fixed-pattern display apparatus is fabricated by means of a resistive heating process or a light-beam heating process. For making the fixed-pattern display apparatus by means of resistive heating, the fixed-pattern display apparatus comprises at least a substrate, a lower electrode, a reconfigurable organic light-emitting material structure, and an upper electrode. The display patterns of a fixed-pattern display apparatus may be reconfigured with a patterned heating unit. For making the fixed-pattern display by means of a light-beam, the fixed-pattern display apparatus comprises at least a substrate, a lower electrode, a reconfigurable organic light-emitting layer, an upper electrode and a light-to-heat conversion layer. The light-to-heat conversion layer is exposed to a light-beam emitted from a light source to form heated regions, which then form the display patterns in the fixed-pattern display apparatus.

[0016] The passive-matrix display apparatus is fabricated by means of resistive heating process or a light-beam heating process. For making the passive-matrix display by means of a resistive heating, the passive-matrix display apparatus at least comprises a substrate, a lower electrode, a patterned insulating layer, a reconfigurable organic light-emitting structure, and an upper electrode. By applying a certain amount of current on a heating electrode, color pixels may thus be formed on the display apparatus. For making the passive-matrix display by means of a light-beam, the passive-matrix display at least comprises a substrate, a lower electrode, a reconfigurable organic light-emitting structure, an upper electrode and a light-to-heat conversion layer. The light-to-heat conversion layer is exposed to a light-beam emitted from a light source to form heated regions. Through the heating, color pixels are thus formed on the display apparatus.

[0017] The active-matrix display apparatus is fabricated by means of resistive heating process or a light-beam heating process. For heating the active-matrix display by means of resistive heating, the passive-matrix display apparatus at least comprises a substrate, a first insulating layer, a heating electrode, a second insulating layer, a lower electrode, a reconfigurable organic light-emitting layer, an upper electrode, and a transistor circuit. By applying a certain amount of current on the heating electrode, color pixels are thus formed on the display apparatus. Furthermore, whether the reconfigurable organic light-emitting device emits or not is controlled by the transistor circuit. For fabricating the active-matrix display apparatus by means of light-beam heating, the active-matrix display apparatus at least comprises a substrate, a transistor circuit, a first insulating layer, a lower electrode, a reconfigurable organic light-emitting layer, an upper electrode and a light-to-heat conversion layer. The light-to-heat conversion layer is exposed to a light-beam emitted from a light source to form heated regions. Through the heating, color pixels are thus formed on the display apparatus. In addition, whether the reconfigurable organic light-emitting device emits or not is controlled by the transistor circuit.

BRIEF DESCRIPTION OF THE DRAWINGS

[0018] FIG. 1 illustrates the schematic energy level diagram of the conventional organic light-emitting device.

[0019] FIG. 2a and FIG. 2b are schematic energy level diagrams, illustrating the reconfigurable organic light-emitting device having a single layer high-energy-gap carrier-blocking layer.

[0020] FIG. 3 is a cross-sectional view of the reconfigurable organic light-emitting device having a single layer of high-energy-gap carrier-blocking material FIG. 4a to FIG. 4d are molecular structures of organic materials used in the organic layers of the reconfigurable organic light-emitting device in FIG. 3.

[0021] FIG. 5a to FIG. 5c are diagrams illustrating the light-emitting characteristics of the reconfigurable organic light-emitting device, in one particular embodiment (FIG. 3, FIG. 4).

[0022] FIG. 6a to FIG. 6d are energy level diagrams, illustrating the reconfigurable light-emitting device having two layers of high-energy-gap carrier-blocking material.

[0023] FIG. 7 is a cross-sectional view of the reconfigurable organic light-emitting device having two layers of high-energy-gap carrier-blocking materials.

[0024] FIG. 8a to FIG. 8f are the molecular structures of organic materials used in the reconfigurable organic light-emitting device in FIG. 7.

[0025] FIG. 9a to FIG. 9c are diagrams illustrating the light-emitting characteristics of the reconfigurable organic light-emitting device, in one particular embodiment (FIG. 7, FIG. 8).

[0026] FIG. 10 shows top view and a front view, and a side view of the reconfigurable organic light-emitting device having built-in resistive heating electrodes, in accordance with the present invention.

[0027] FIG. 11 is a diagram illustrating the device structure and the heating method of a reconfigurable organic light-emitting device containing built-in resistive heating electrodes.

[0028] FIG. 12a to FIG. 12c are diagrams illustrating the light-emitting characteristics of the reconfigurable organic light-emitting device, in one particular embodiment of the present invention.

[0029] FIG. 13a and FIG. 13c are diagrams illustrating the light-emitting characteristics of the reconfigurable organic light-emitting device, in another particular embodiment of the present invention.

[0030] FIG. 14 is a diagram illustrating the device structure and the heating method of a reconfigurable organic light-emitting device containing built-in resistive heating electrodes, wherein the heating electrodes are additionally fabricated heating electrodes.

[0031] FIG. 15a and FIG. 15b are diagrams illustrating the device structure and heating method of a reconfigurable organic light-emitting device using external heating sources. FIG. 15b illustrates the device after being fabricated.

[0032] FIG. 16a and FIG. 16b are diagrams illustrating the heating method for heating the reconfigurable organic

light-emitting device by shining a light-beam on a light-to-heat conversion layer thereon, wherein FIG. 16a illustrates the device before being heated and reconfigured while FIG. 16b illustrates the device after being heated and reconfigured.

[0033] FIG. 17 is a cross-sectional diagram illustrating the reconfigurable organic light-emitting device having a light-to-heat conversion layer, in accordance with the present invention.

[0034] FIG. 18a to FIG. 18d are molecular structures of the organic materials used in the reconfigurable organic light-emitting device having a light-to-heat conversion layer (FIG. 17).

[0035] FIG. 19 is a diagram illustrating the light-emitting properties of the reconfigurable organic light-emitting device having a light-to-heat conversion layer, in one particular embodiment of the present invention.

[0036] FIG. 20 is a perspective view of the fixed-pattern display apparatus employing the reconfigurable organic light-emitting device, wherein the display apparatus is heated via a patterned heating unit.

[0037] FIG. 21 is a perspective view of the fixed-pattern display apparatus employing the reconfigurable organic light-emitting device, wherein the display apparatus is heated via a light-beam.

[0038] FIG. 22a to FIG. 22d are perspective views of the passive-matrix display apparatus employing the reconfigurable organic light-emitting device during steps of fabrication, wherein the display apparatus is heated using the device electrode as the resistive heating electrodes.

[0039] FIG. 23a to FIG. 23f are perspective views for the steps of fabricating the passive-matrix display apparatus employing the reconfigurable organic light-emitting device, wherein the display apparatus is heated using additional heating electrodes.

[0040] FIG. 24a to FIG. 24d are perspective views for the steps of fabricating the passive-matrix display apparatus employing the reconfigurable organic light-emitting device, wherein the display apparatus is heated via a light-beam.

[0041] FIG. 25 is a cross-sectional view of the active-matrix display apparatus employing the reconfigurable organic light-emitting device, wherein the display apparatus is heated using additional heating electrodes.

[0042] FIG. 26 is a schematic diagram of the spatial arrangement in the active-matrix display apparatus employing the reconfigurable organic light-emitting device.

[0043] FIG. 27 is a cross-sectional view of the active-matrix display apparatus fabricated by employing the reconfigurable organic light-emitting device, wherein the display apparatus is heated via a light-beam.

EMBODIMENTS OF THE INVENTION

[0044] The preferred embodiments of the present invention for a reconfigurable organic light-emitting device and the display apparatus employing the reconfigurable organic light-emitting device are hereinafter described in detail, together with the accompanied drawings, wherein like reference numbers represent like elements. In the following,

the organic light-emitting structure, the method for local heating for reconfiguring such structure and the display apparatus are discussed consecutively.

[0045] 1. Organic Light-Emitting Structure:

[0046] (1) Single High-Energy-Gap Carrier-Blocking Layer

[0047] Referring now to FIG. 2a and FIG. 2b, wherein various structures of a reconfigurable organic light-emitting device 2 of the present invention are illustrated, the reconfigurable organic light-emitting device 2 has one layer of high-energy-gap carrier-blocking material. As shown in FIG. 2a, the reconfigurable organic light-emitting device 2 comprises an anode 10, a hole-transport/first light-emitting layer (HTL/EML1) 111, a hole-blocking/electron-transport layer (HBL/ETL) 115, an electron-transport/second light-emitting layer (ETL/EML2) 119 and a cathode 14, wherein the material of the hole-blocking/electron-transport layer 115 having a glass transition temperature of T_g is selected, and the glass transition temperature T_g is smaller than those of other organic material layers used. In addition, by appropriately choosing the material of the hole-transport/first light-emitting layer 111 and the electron-transport/second light-emitting layer 119, the wavelength of emission of the hole-transport/first light-emitting layer 111 is smaller than that of the electron-transport/second light-emitting layer 119. If the hole-transport/first light-emitting layer 111 and the electron-transport/second light-emitting layer 119 are inter-diffused and excited to emit light, light with the characteristic spectrum of the electron-transport/second light-emitting layer 119 is emitted.

[0048] Under such structure, holes are injected through the anode 10 into the hole-transport/first light-emitting layer 111 of the organic light-emitting device. When holes are transported to the boundary of the hole-transport/first light-emitting layer 111 and the hole-blocking/electron-transport layer 115 through the hole-transport/first light-emitting layer 111, holes will be blocked by the hole-blocking/electron-transport layer 115 and accumulated at the right hand side of the hole-transport/first light-emitting layer 111. On the other hand, the electrons injected into the electron-transport/second light-emitting layer 119 of the organic light-emitting device through the cathode 14 may be transported from the cathode 14, through the electron-transport/second light-emitting layer 119 and the hole-blocking/electron-transport layer 115, to the left hand side of the hole-blocking/electron-transport layer, and recombine with holes accumulated at the right hand side of the hole-transport/first light-emitting layer 111 so as to emit light. Meanwhile, the light having the characteristic spectrum of the hole-transport/first light-emitting layer 111 is thus emitted.

[0049] If a heating process is performed on the light-emitting device 2 during the fabricating process of the device or after the device is fabricated, when the heating temperature is higher than the glass transition temperature T_g of the hole-blocking/electron-transport layer 115 and lower than those of the other organic material layers, the molecules of the hole-blocking/electron-transport layer 115 become more permeable, diffusible or inter-diffusible than other material layers. Therefore, the hole-blocking/electron-transport layer 115 starts the inter-diffusion process with the adjacent hole-transport/first light-emitting layer 111 and the electron-transport/second light-emitting layer 119, and the

hole-transport/first light-emitting layer 111 and the electron-transport/second light-emitting layer 119 may then be bridged or mixed so as to bypass the hole-blocking characteristics of the hole-blocking/electron-transport layer 115. Since the wavelength of the light emitted by the material of the hole-transport/first light-emitting layer 111 is smaller than that of the electron-transport/second light-emitting layer 119, when the hole-transport/first light-emitting layer 111 and the electron-transport/second light-emitting layer 119 are mixed, the electrons and the holes may be recombined in the material of the hole-transport/first light-emitting layer 111 and emit light of layer 119 by means of energy transfer the electron-transport/second light-emitting layer 119, or, the electrons and the holes directly recombine in the electron-transport/second light-emitting layer 119 to emit light of layer 119. The emission in accordance with two above-mentioned mechanisms are both from the electron-transport/second light-emitting layer 119, the characteristic spectrum of the emission is thus altered from that of the hole-transport/first light-emitting layer 111 to that of the electron-transport/second light-emitting layer 119.

[0050] Referring now to FIG. 2b, the reconfigurable organic light-emitting device 2 comprises an anode 10, a hole-transport/second light-emitting layer (HTL/EML1) 121, an electron-blocking/hole-transport layer (EBL/HTL) 125, an electron-transport/first light-emitting layer (ETL/EML1) 129 and a cathode 14, wherein the material of the electron-blocking/hole-transport layer having a glass transition temperature of T_g is selected, and the glass transition temperature T_g is smaller than those of other material layers. In addition, by selecting the material of the electron-transport/second light-emitting layer 121 and the electron-transport/first light-emitting layer 129, the wavelength of the emission by the hole-transport/second light-emitting layer 121 is larger than that of the electron-transport/first light-emitting layer 129. Therefore, hole-transport/second light-emitting layer 121 and the electron-transport/first light-emitting layer 129 are inter-diffused and excited to emit light, the light with the characteristic spectrum of the electron-transport/second light-emitting layer 121 is thus emitted.

[0051] Under such structure, electrons are injected through the cathode 14 into the electron-transport/first light-emitting layer 129 of the organic light-emitting device. When the electrons are transported to the boundary of the electron-transport/first light-emitting layer 129 and the electron-blocking/hole-transport layer 125 through the electron-transport/first light-emitting layer 129, the electrons will be blocked by the electron-blocking/hole-transport layer 125 and accumulated at the left hand side of the electron-transport/first light-emitting layer 129. On the other hand, holes injected into the hole-transport/second light-emitting layer 121 of the organic light-emitting device through the anode 10 may be transported from the anode 10, through the electron-blocking/hole-transport layer 125, to the right hand side of the electron-blocking/hole-transport layer 125, and recombined with the electrons accumulated at the left hand side of the electron-transport/first light-emitting layer 129 so as to emit light. Meanwhile, the light having the characteristic spectrum of the electron-transport/first light-emitting layer 129 is thus emitted.

[0052] If a heating process is performed on the light-emitting device 2 during the fabricating process of the

device or after the device is fabricated, when the heating temperature is higher than the glass transition temperature T_g of the electron-blocking/hole-transport layer **125** and lower than that of the other organic material layers, the molecules of the electron-blocking/hole-transport layer **125** thus become more permeable, diffusible or interdiffusible than that of the other organic material layers. Therefore, when the electron-blocking/hole-transport layer **125** starts the inter-diffusion process with the adjacent hole-transport/second light-emitting layer **121** and the electron-transport/first light-emitting layer **129**, hole-transport/second light-emitting layer **121** and the electron-transport/first light-emitting layer **129** may then be bridged or mixed so as to bypass the electron-blocking characteristics of the electron-blocking/hole-transport layer **125**. Since the wavelength of the emission by the material of the electron-transport/first light-emitting layer **129** is smaller than that of the hole-transport/second light-emitting layer **121**, the electrons and the holes may be recombined at the electron-transport/first light-emitting layer **129** and emit light by means of energy conversion after transferring to the hole-transport/second light-emitting layer **121**, when the electron-transport/first light-emitting layer **129** and the hole-transport/second light-emitting layer **121** are mixed. Or, the electrons and the holes may emit light after direct recombined in the hole-transport/second light-emitting layer **121**. The emission in accordance with the above-mentioned light-emitting method are both from the hole-transport/second light-emitting layer, the characteristic spectrum of the emission is thus altered from that of the electron-transport/first light-emitting layer **129** to that of the hole-transport/second light-emitting layer **121**.

EXAMPLE

[0053] The following further discloses the structure and materials selected for each of the organic layers of the reconfigurable organic light-emitting device **2** of the present invention. As shown in FIG. 3 and FIG. 4, the reconfigurable organic light-emitting device **2** comprises a glass substrate **30** coated with ITO as a lower electrode, a layer of polyethylene dioxythiophene/polystyrene sulphonate (PEDT:PSS; see FIG. 4a) as a hole injection layer **32**, a layer of N,N'-diphenyl-N,N'-bis (4'-(N,N-bis(naphth-1-yl)-amino)-biphenyl-4-yl)-benzidine (a triarylamine tetramer, TATE, FIG. 4b) as a hole-transport/first light-emitting layer **131**, a layer of 2,9-dimethyl-4,7-diphenyl-1,10-phenanthroline (BCP; see FIG. 4c) as a hole-blocking/electron-transport layer **135**, a layer of tris-(8-hydroxyquinoline) aluminum (Alq; see FIG. 4d) as an electron-transport/second light-emitting layer **139**, and a layer of lithium fluoride and aluminum (LiF/Al) as an electron-injection layer and an upper electrode **34**, respectively. Wherein, the material of the hole-transport/first light-emitting layer **131** emits blue light, while the electron-transport/second light-emitting layer **139** emits green light. Furthermore, the glass transition temperature of the hole-transport/first light-emitting layer **131** is approximately 150° C., the glass transition temperature of the hole-blocking/electron-transport layer **135** is approximately 80° C., and the glass transition temperature of the electron-transport/second light-emitting layer **139** is approximately 170° C. Referring to FIG. 3, the device structure of the reconfigurable organic light-emitting device **2** of the present invention is illustrated, wherein the glass substrate **30** coated with ITO is the lower electrode, and a layer of PEDT:PSS with a thickness of 300 Å is deposited

thereon as the hole injection layer **32**; a layer of TATE with a thickness of 400 Å is then deposited on the hole injection layer **32** as the hole-transport/first light-emitting layer **131**; a layer of BCP with a thickness of 150 Å is subsequently deposited on the hole-transport/first light-emitting layer **131** as the hole-blocking/electron-transport layer **135**; a layer of Alq with a thickness of 600 Å is then deposited on the hole-blocking/electron-transport layer **135** as the electron-transport/second light-emitting layer **139**; finally, a layer of lithium fluoride with a thickness of 5 Å are subsequently deposited on the electron-transport/second light-emitting layer **139** and a layer of aluminum with a thickness of 1500 Å as the electron injection layer and the upper electrode **34**.

[0054] Referring now to FIG. 5a, the normalized intensity—wavelength characteristics measured after applying a current density of approximately 25 mA/cm² on the reconfigurable organic light-emitting device **2** of the present invention are illustrated. As shown in the figure, the curve **501** as represented by solid circles illustrates the emission spectrum after the reconfigurable organic light-emitting device **2** of the present invention is fabricated, and before any conversion (heating) process. By observing the curve **501**, one finds a peak of approximately 480 nm, which represents the characteristic emission spectrum of the hole-transport/first light-emitting layer **131** that emits blue light. After heating the reconfigurable organic light-emitting device **2** at a temperature of 130° C. for 3 minutes, the characteristic spectrum of the reconfigurable organic light-emitting device **2** changes to curve **502** represented by hollow squares. By observing the curve **502**, one finds a peak at the wavelength of approximately 530 nm. It represents the characteristic emission spectrum of the electron-transport/second light-emitting layer **139** that emits green light. Therefore, according to FIG. 5a, it is confirmed that the reconfigurable organic light-emitting device **2** of the present invention indeed changes its emission wavelength by means of a heating process. Referring next to FIG. 5b and FIG. 5c, wherein the characteristic of the measured current density—voltage and the light-emitting brightness—voltage after applying a bias voltage of 0 volts to 10 volts on the reconfigurable organic light-emitting device **2** of the present invention are illustrated, respectively. Curves **503** and **505** as represented by solid circles illustrate the characteristics of the reconfigurable organic light-emitting device **2** of the present invention before any heating process, while curves **504** and **506** as represented by hollow squares illustrate the characteristics of the reconfigurable organic light-emitting device **2** of the present invention after a heating process is performed for 3 minutes. As shown in FIG. 5b and FIG. 5c, the characteristics of the reconfigurable organic light-emitting device **2** of the present invention remains in good operation conditions both before or after the heating process. Therefore, either before or after the heating process, the reconfigurable organic light-emitting device **2** of the present invention remains in a good operation state.

[0055] (2) Double High-Energy-Gap Carrier-Blocking Layer

[0056] Referring now to FIG. 6a to FIG. 6d, various structures of reconfigurable organic light-emitting devices **2'** having two layers of high-energy-gap carrier-blocking materials are illustrated. As shown in FIG. 6a, the reconfigurable organic light-emitting device **2'** comprises an anode **10**, a

hole-transport/first light-emitting layer **611** (HTL/EML1), a first hole-blocking/electron-transport layer **613** (HBL/ETL1), a first electron-transport/second light-emitting layer **615** (ETL1/EML2), a second hole-blocking/electron-transport layer **617** (HBL/ETL2), a second electron-transport/third light-emitting layer **619** (ETL2/EML3) and a cathode **14**. The material of the first hole-blocking/electron-transport layer **613** and the second hole-blocking/electron-transport layer **617** having a glass transition temperatures of Tg1 and Tg2 are selected, respectively, where Tg1 is smaller than Tg2, and the glass transition temperatures Tg1 and Tg2 are both smaller than those other organic materials used. Moreover, the materials of the hole-transport/first light-emitting layer **611**, the first electron-transport/second light-emitting layer **615** and the second electron-transport/third light-emitting layer **619** are selected such that the emission wavelength of the hole-transport/first light-emitting layer **611** is smaller than that of the first electron-transport/second light-emitting layer **615**, and the emission wavelength of the first electron-transport/second light-emitting layer **615** is smaller than that of the second electron-transport/third light-emitting layer **619**. When the hole-transport/first light-emitting layer **611** and the first electron-transport/second light-emitting layer **615** are inter-diffused and excited to emit light, the light is thus emitted by the first electron-transport/second light-emitting layer **615**. When the hole-transport/first light-emitting layer **611** and the first electron-transport/second light-emitting layer **615**, and the second electron-transport/third light-emitting layer **619** are inter-diffused and excited to emit light, the light is thus emitted by the second electron-transport/third light-emitting layer **619**.

[0057] Under such a structure, holes are injected to the hole-transport/first light-emitting layer **611** of the organic light-emitting device through the anode **10**. When the holes are transported to the boundary of the hole-transport/first light-emitting layer **611** and the first hole-blocking/electron-transport layer **613** through the hole-transport/first light-emitting layer **611**, holes will be blocked by the first hole-blocking/electron-transport layer **613** and accumulated at the right hand side of the hole-transport/first light-emitting layer **611**. On the other hand, the electrons injected into the second electron-transport/third light-emitting layer **619** of the organic light-emitting device through the cathode **14** are transported from the cathode **14**, through the second electron-transport/third light-emitting layer **619** and the second hole-blocking/electron-transport layer **617**, the first electron-transport/second light-emitting layer **615** and the first hole-blocking/electron-transport layer **613**, to the left hand side of the first hole-blocking/electron-transport layer **613**, and recombine with holes accumulated at the right hand side of the hole-transport/first light-emitting layer **611** so as to emit light. Consequently, light having the characteristic spectrum of the hole-transport/first light-emitting layer **611** is thus emitted.

[0058] If a heating process is performed on the light-emitting device **2'** during the fabricating process of the device or after the device is fabricated, when the heating temperature is higher than the glass transition temperature Tg1 of the first hole-blocking/electron-transport layer **613**, the molecules of the first hole-blocking/electron-transport layer **613** thus become more active. Therefore, the first hole-blocking/electron-transport layer **613** starts the inter-diffusion process with the adjacent hole-transport/first light-emitting layer **611** and the first electron-transport/second

light-emitting layer **615**, the hole-transport/first light-emitting layer **611** and the first electron-transport/second light-emitting layer **615** may then be bridged or mixed so as to bypass the hole-blocking characteristics of the first hole-blocking/electron-transport layer **613**. Since the emission wavelength of the material of the hole-transport/first light-emitting layer **611** is smaller than that of the first electron-transport/second light-emitting layer **615** when the hole-transport/first light-emitting layer **611** and the first electron-transport/second light-emitting layer **615** are mixed, the electrons and the holes may be recombined at the hole-transport/first light-emitting layer **611** and emit light of layer **615** by energy transfer to the first electron-transport/second light-emitting layer **615**; or, the electrons and the holes may directly recombine in the first electron-transport/second light-emitting layer **615** to emit light of layer **619**. The emission in accordance with two above-mentioned mechanisms are both from the first electron-transport/second light-emitting layer **615**, the characteristic spectrum of the emission is thus changed from that of the hole-transport/first light-emitting layer **611** to that of the electron-transport/second light-emitting layer **615**.

[0059] If a heating process is performed on the light-emitting device **2'** during the fabricating process of the device or after the device is fabricated, when the heating temperature is higher than the glass transition temperature Tg2 of the second hole-blocking/electron-transport layer **617** and lower than that of other organic material layers used, the molecules of the second hole-blocking/electron-transport layer **617** thus become more active. Therefore, when the second hole-blocking/electron-transport layer **617** starts the inter-diffusion process with the adjacent first hole-transport/second light-emitting layer **615** and the second electron-transport/third light-emitting layer **619**, the first electron-transport/second light-emitting layer **615** and the second electron-transport/third light-emitting layer **619** may then be bridged or mixed so as to bypass the hole-blocking characteristics of the second hole-blocking/electron-transport layer **617**. Since the emission wavelength of the material of the first hole-transport/second light-emitting layer **615** is smaller than that of the second electron-transport/third light-emitting layer **619**, the electrons and the holes may be recombined at the first electron-transport/second light-emitting layer **615** and emit light by energy transfer to the second electron-transport/third light-emitting layer **619**, when the first electron-transport/second light-emitting layer **615** and the second electron-transport/third light-emitting layer **619** are mixed. Or, the electrons and the holes may emit light after direct recombine in the second electron-transport/third light-emitting layer **619**. The emission in accordance with two above-mentioned mechanisms are both from the second electron-transport/third light-emitting layer **619**, the characteristic spectrum of the emission is thus changed from that of the first electron-transport/second light-emitting layer **615** to that of the second electron-transport/third light-emitting layer **619**.

[0060] Referring now to FIG. 6b, it is illustrated that the reconfigurable organic light-emitting device **2'** comprises an anode **10**, a second hole-transport/third light-emitting layer **621** (HTL2/EML3), a second electron-blocking/hole-transport layer **623** (HBL/HTL2), a first hole-transport/second light-emitting layer **625** (HTL1/EML2), a first electron-blocking/hole-transport layer **627** (HBL/HTL1), an electron-transport/first light-emitting layer **629** (ETL/EML1)

and a cathode 14, wherein the material of the second electron-blocking/hole-transport layer 623 and the first electron-blocking/hole-transport layer 627 having a glass transition temperatures of Tg1 and Tg2 are selected, respectively, while Tg1 is smaller than Tg2, and the glass transition temperatures Tg1 and Tg2 are both smaller than that of other organic material layers used. Moreover, the materials of the second hole-transport/third light-emitting layer 621, the first hole-transport/second light-emitting layer 625 and the electron-transport/first light-emitting layer 629 are selected such that the emission wavelength of the electron-transport/first light-emitting layer 629 is smaller than that of the first hole-transport/second light-emitting layer 625, and the emission wavelength of the first hole-transport/second light-emitting layer 625 is smaller than that of the second hole-transport/third light-emitting layer 621. When the electron-transport/first light-emitting layer 629 and the first hole-transport/second light-emitting layer 625 are inter-diffused and excited to emit light, the light is thus emitted by the first hole-transport/second light-emitting layer 625. When the electron-transport/first light-emitting layer 629 and the first hole-transport/second light-emitting layer 625, and the second hole-transport/third light-emitting layer 621 are inter-diffused and excited to emit light, the light is thus emitted by the second hole-transport/third light-emitting layer 621.

[0061] Under such a structure, electrons are injected to the electron-transport/first light-emitting layer 629 of the organic light-emitting device through the cathode 14. When the electrons are transported to the boundary of the electron-transport/first light-emitting layer 629 and the first electron-blocking/hole-transport layer 627 through the electron-transport/first light-emitting layer 629, the electrons will be blocked by the first electron-blocking/hole-transport layer 627 and accumulated at the left hand side of the electron-transport/first light-emitting layer 629. On the other hand, the holes injected into the second hole-transport/third light-emitting layer 621 of the organic light-emitting device through the anode 10 may be transported from the anode 10, through the second hole-transport/third light-emitting layer 621 and the second electron-blocking/hole-transport layer 623, and through the first hole-transport/second light-emitting layer 625 and the first electron-blocking/hole-transport layer 627, to the right hand side of the first electron-blocking/hole-transport layer 627, and recombined with the electrons accumulated at the left hand side of the electron-transport/first light-emitting layer 629 so as to emit light. Additionally, the light having the characteristic spectrum of the electron-transport/first light-emitting layer 629 is thus emitted.

[0062] If a heating process is performed on the light-emitting device 2' during the fabricating process of the device or after the device is fabricated, when the heating temperature is higher than the glass transition temperature Tg1 of the first electron-blocking/hole-transport layer 627 and lower than that of other organic material layers used, the molecules of the first electron-blocking/hole-transport layer 627 thus become more active. Therefore, when the first electron-blocking/hole-transport layer 627 starts the inter-diffusion process with the adjacent first hole-transport/second light-emitting layer 625 and the electron-transport/first light-emitting layer 629, the first hole-transport/second light-emitting layer 625 and the electron-transport/first light-emitting layer 629 may then be bridged or mixed so as to bypass the electron blocking characteristics of the first

electron-blocking/hole-transport layer 627. Since the emission wavelength of the material of the electron-transport/first light-emitting layer 629 is smaller than that of the first hole-transport/second light-emitting layer 625, the electrons and the holes may be recombined at the electron-transport/first light-emitting layer 629 and emit light by energy transfer to the first hole-transport/second light-emitting layer 625, when the electron-transport/first light-emitting layer 629 and the first hole-transport/second light-emitting layer 625 are mixed. Or, the electrons and the holes may emit light direct recombine in the first hole-transport/second light-emitting layer 625. The emission in accordance with two mechanisms are both from the first hole-transport/second light-emitting layer 625, the characteristic spectrum of the emission is thus changed from that of the electron-transport/first light-emitting layer 629 to that of the first hole-transport/second light-emitting layer 625.

[0063] If a heating process is performed on the light-emitting device 2' during the fabricating process of the device or after the device is fabricated, when the heating temperature is higher than the glass transition temperature Tg2 of the second electron-blocking/hole-transport layer 623 and lower than that of other organic material layers used, the molecules of the second electron-blocking/hole-transport layer 623 thus become more active. Therefore, when the second electron-blocking/hole-transport layer 623 starts the inter-diffusion process with the adjacent first hole-transport/second light-emitting layer 625 and the second hole-transport/third light-emitting layer 621, the first hole-transport/second light-emitting layer 625 and the second hole-transport/third light-emitting layer 621 may then be bridged or mixed so as to bypass the electron blocking characteristics of the second electron-blocking/hole-transport layer 623. Since the emission wavelength of the material of the first hole-transport/second light-emitting layer 625 is smaller than that of the second hole-transport/third light-emitting layer 621, the electrons and the holes may be recombined at the first hole-transport/second light-emitting layer 625 and emit light by energy transfer to the second hole-transport/third light-emitting layer 621, when the first hole-transport/second light-emitting layer 625 and the second hole-transport/third light-emitting layer 621 are mixed. Or, the electrons and the holes may direct recombine in the second hole-transport/third light-emitting layer 621. The emission in accordance with two above-mentioned mechanisms are both from the second hole-transport/third light-emitting layer 621, the characteristic spectrum of the emission is thus changed from that of the first hole-transport/second light-emitting layer 625 to that of the second hole-transport/third light-emitting layer 621.

[0064] Referring now to FIG. 6c, it is illustrated that the reconfigurable organic light-emitting device 2' comprises an anode 10, a hole-transport/first light-emitting layer 631 (HTL/EML1), a first hole-blocking/electron-transport layer 633 (HBL/ETL1), an electron hole-transport/second light-emitting layer 635 (BTL1/EML2), a second hole-blocking/electron-transport layer 637 (HBL/ETL2), an electron-transport/third light-emitting layer 639 (ETL/EML3) and a cathode 14, wherein the material of the first hole-blocking/electron-transport layer 633 and the second hole-blocking/electron-transport layer 637 having a glass transition temperatures of Tg1 and Tg2 are selected, respectively, while Tg1 is smaller than Tg2, and the glass transition temperatures Tg1 and Tg2 are both smaller than those of other

organic material layers used. Moreover, the materials of the hole-transport/first light-emitting layer 631, electron hole-transport/second light-emitting layer 635 and the electron-transport/third light-emitting layer 639 are selected such that the emission wavelength of the hole-transport/first light-emitting layer 631 is smaller than that of the electron hole-transport/second light-emitting layer 635, and the emission wavelength of the electron hole-transport/second light-emitting layer 635 is smaller than that of the electron-transport/third light-emitting layer 639. When the hole-transport/first light-emitting layer 631 and the electron hole-transport/second light-emitting layer 635 are inter-diffused and excited to emit light, the light is thus emitted by the electron hole-transport/second light-emitting layer 635. When the hole-transport/first light-emitting layer 631 and the electron hole-transport/second light-emitting layer 635, and the electron-transport/third light-emitting layer 639 are inter-diffused and excited to emit light, the light is thus emitted by the electron-transport/third light-emitting layer 639.

[0065] Under such a structure, holes are injected to the hole-transport/first light-emitting layer 631 of the organic light-emitting device through the anode 10. When holes are transported to the boundary of the hole-transport/first light-emitting layer 631 and the first hole-blocking/electron-transport layer 633 through the hole-transport/first light-emitting layer 631, the holes will be blocked by the first hole-blocking/electron-transport layer 633 and accumulated at the right hand side of the hole-transport/first light-emitting layer 631. On the other hand, the electrons are injected into the electron-transport/third light-emitting layer 639 of the organic light-emitting device through the cathode 14 may be transported from the cathode 14, through the electron-transport/third light-emitting layer 639 and the second hole-blocking/electron-transport layer 637, and through the electron-transport/second light-emitting layer 635 and the first hole-blocking/electron-transport layer 633, to the left hand side of the first hole-blocking/electron-transport layer 633, and recombined with holes accumulated at the right hand side of the hole-transport/first light-emitting layer 631 so as to emit light. Meanwhile, light having the characteristic spectrum of the hole-transport/first light-emitting layer 631 is thus emitted.

[0066] If a heating process is performed on the light-emitting device 2' during the fabricating process of the device or after the device is fabricated, when the heating temperature is higher than the glass transition temperature Tg1 of the first hole-blocking/electron-transport layer 633 and lower than those of other organic material layers used, the molecules of the first hole-blocking/electron-transport layer 633 thus become more active. Therefore, when the first hole-blocking/electron-transport layer 633 starts the inter-diffusion process with the adjacent electron hole-transport/second light-emitting layer 635 and the hole-transport/first light-emitting layer 631, the electron hole-transport/second light-emitting layer 635 and the hole-transport/first light-emitting layer 631 may then be bridged or mixed so as to bypass the hole-blocking characteristics of the first hole-blocking/electron-transport layer 633. Since the emission wavelength of the material of the hole-transport/first light-emitting layer 631 is smaller than that of the electron hole-transport/second light-emitting layer 635, the electrons and the holes may be recombined at the hole-transport/first light-emitting layer 631 and emit light by means of energy

conversion after transferring to the electron hole-transport/second light-emitting layer 635, when the hole-transport/first light-emitting layer 631 and the electron hole-transport/second light-emitting layer 635 are mixed. Or, the electrons and the holes may directly recombine in the electron hole-transport/second light-emitting layer 635. The emission in accordance with two mechanisms are both from the electron hole-transport/second light-emitting layer 635, the characteristic spectrum of the light emitted is thus changed from that of the hole-transport/first light-emitting layer 631 to that of the electron hole-transport/second light-emitting layer 635.

[0067] If a heating process is performed on the light-emitting device 2' during the fabricating process of the device or after the device is fabricated, when the heating temperature is higher than the glass transition temperature Tg2 of the second hole-blocking/electron-transport layer 637 and lower than that of the other organic material layers, the molecules of the second hole-blocking/electron-transport layer 637 thus become more active. Therefore, when the second hole-blocking/electron-transport layer 637 starts the inter-diffusion process with the adjacent electron hole-transport/second light-emitting layer 635 and the electron-transport/third light-emitting layer 639, the electron hole-transport/second light-emitting layer 635 and the electron-transport/third light-emitting layer 639 may then be bridged or mixed so as to diminish the hole-blocking characteristics of the second hole-blocking/electron-transport layer 637. Since the wavelength of the light emitted by the material of the electron hole-transport/second light-emitting layer 635 is smaller than that of the electron-transport/third light-emitting layer 639, the electrons and the holes may be recombined at the electron hole-transport/second light-emitting layer 635 and emit light by means of energy conversion after transferring to the electron-transport/third light-emitting layer 639, when the electron hole-transport/second light-emitting layer 635 and the electron-transport/third light-emitting layer 639 are mixed. Or, the electrons and the holes may emit light after directly recombined in the electron-transport/third light-emitting layer 639. The light emitted in accordance with the above-mentioned light-emitting method are both emitted by the electron-transport/third light-emitting layer 639, the characteristic spectrum of the light emitted is thus altered from that of the electron hole-transport/second light-emitting layer 635 to that of the electron-transport/third light-emitting layer 639.

[0068] Referring now to FIG. 6d, it is illustrated that the reconfigurable organic light-emitting device 2' comprises an anode 10, a hole-transport/third light-emitting layer 641 (HTL/EML3), a second electron blocking/hole-transport layer 643 (EBL/HTL2), an electron hole-transport/second light-emitting layer 645 (BTL/EML2), a first electron blocking/hole-transport layer 647 (EBL/HTL1), an electron-transport/first light-emitting layer 649 (ETL/EML1) and a cathode 14, wherein the material of the second electron blocking/hole-transport layer 643 and the first electron blocking/hole-transport layer 647 having a glass transition temperature of Tg1 and Tg2 are selected, respectively, while Tg1 is smaller than Tg2, and the glass transition temperatures Tg1 and Tg2 are both smaller than that of the other selected organic material layers. Moreover, the materials of the hole-transport/third light-emitting layer 641, the electron hole-transport/second light-emitting layer 645 and the electron-transport/first light-emitting layer 649 are selected such

that the wavelength of the light emitted by the electron-transport/first light-emitting layer 649 is smaller than that of the electron hole-transport/second light-emitting layer 645, and the wavelength of the light emitted by the electron hole-transport/second light-emitting layer 645 is smaller than that of the hole-transport/third light-emitting layer 641. When the electron-transport/first light-emitting layer 649 and the electron hole-transport/second light-emitting layer 645 are inter-diffused and excited to emit light, the light is thus emitted by the electron-transport/first light-emitting layer 649. When the electron-transport/first light-emitting layer 649 and the electron hole-transport/second light-emitting layer 645, and the hole-transport/third light-emitting layer 641 are inter-diffused and excited to emit light, the light is thus emitted by the hole-transport/third light-emitting layer 641.

[0069] Under such a structure, electrons are injected to the electron-transport/first light-emitting layer 649 of the organic light-emitting device through the cathode 14. When the electrons are transported to the boundary of the electron-transport/first light-emitting layer 649 and the first electron blocking/hole-transport layer 647 through the electron-transport/first light-emitting layer 649, the electrons will be blocked by the first electron blocking/hole-transport layer 647 and accumulated at the left hand side of the electron-transport/first light-emitting layer 649. On the other hand, the holes injected into the hole-transport/third light-emitting layer 641 of the organic light-emitting device through the anode 10 may be transported from the anode 10, through the hole-transport/third light-emitting layer 641 and the second electron blocking/hole-transport layer 643, and through the electron hole-transport/second light-emitting layer 645 and the first electron blocking/hole-transport layer 647, to the right hand side of the first electron blocking/hole-transport layer 647, and recombined with the electrons accumulated at the left hand side of the electron-transport/first light-emitting layer 649 so as to emit light. Meanwhile, the light having the characteristic spectrum of the electron-transport/first light-emitting layer 649 is thus emitted.

[0070] If a heating process is performed on the light-emitting device 2' during the fabricating process of the device or after the device is fabricated, when the heating temperature is higher than the glass transition temperature Tg1 of the first electron blocking/hole-transport layer 647 and lower than that of the other organic material layers, the molecules of the first electron blocking/hole-transport layer 647 thus become more active. Therefore, when the first electron blocking/hole-transport layer 647 starts the inter-diffusion process with the adjacent electron hole-transport/second light-emitting layer 645 and the electron-transport/first light-emitting layer 649, the electron hole-transport/second light-emitting layer 645 and the electron-transport/first light-emitting layer 649 may then be bridged or mixed so as to diminish the electron blocking characteristics of the first electron blocking/hole-transport layer 647. Since the wavelength of the light emitted by the material of the electron-transport/first light-emitting layer 649 is smaller than that of the electron hole-transport/second light-emitting layer 645, the electrons and the holes may be recombined at the electron-transport/first light-emitting layer 649 and emit light by means of energy conversion after transferring to the electron hole-transport/second light-emitting layer 645, when the electron-transport/first light-emitting layer 649 and the electron hole-transport/second light-emitting layer 645

are mixed. Or, the electrons and the holes may emit light after directly recombined in the electron hole-transport/second light-emitting layer 645. The light emitted in accordance with the above-mentioned light-emitting method are both emitted by the electron hole-transport/second light-emitting layer 645, the characteristic spectrum of the light emitted is thus altered from that of the electron-transport/first light-emitting layer 649 to that of the electron hole-transport/second light-emitting layer 645.

[0071] If a heating process is performed on the light-emitting device 2' during the fabricating process of the device or after the device is fabricated, when the heating temperature is higher than the glass transition temperature Tg2 of the second electron blocking/hole-transport layer 643 and lower than that of the other organic material layers, the molecules of the second electron blocking/hole-transport layer 643 thus become more active. Therefore, when the second electron blocking/hole-transport layer 643 starts the inter-diffusion process with the adjacent electron hole-transport/second light-emitting layer 645 and the hole-transport/third light-emitting layer 641, the electron hole-transport/second light-emitting layer 645 and the hole-transport/third light-emitting layer 641 may then be bridged or mixed so as to diminish the electron blocking characteristics of the second electron blocking/hole-transport layer 643. Since the wavelength of the light emitted by the material of the electron hole-transport/second light-emitting layer 645 is smaller than that of the hole-transport/third light-emitting layer 641, the electrons and the holes may be recombined at the electron hole-transport/second light-emitting layer 645 and emit light by means of energy conversion after transferring to the hole-transport/third light-emitting layer 641, when the electron hole-transport/second light-emitting layer 645 and the hole-transport/third light-emitting layer 641 are mixed. Or, the electrons and the holes may emit light directly after recombined in the hole-transport/third light-emitting layer 641. The light emitted in accordance with the above-mentioned light-emitting method are both emitted by the hole-transport/third light-emitting layer 641, the characteristic spectrum of the light emitted is thus altered from that of the electron hole-transport/second light-emitting layer 645 to that of the hole-transport/third light-emitting layer 641.

EXAMPLE

[0072] The following further discloses the material selected for each of the organic layer of the reconfigurable organic light-emitting device 2' of the present invention. As shown in FIG. 7 and FIG. 8, the reconfigurable organic light-emitting device 2' comprises a glass substrate 70 electroplated with ITO as a lower electrode, a layer of polyethylene dioxythiophene/polystyrene sulphonate (PEDT:PSS; see FIG. 8a) as a hole injection layer 72, a layer of N,N'-diphenyl-N,N'-bis(4'-(N,N-bis(naphth-1-yl)-amino)-biphenyl-4-yl)-benzidine (a triarylamine tetramer) (TATE; see FIG. 8b) as a hole-transport/first light-emitting layer 651, a layer of 3-(4'-tert-butylphenyl)-4-phenyl-5-(4"-biphenyl)-1,2,4-triazole (TAZ; see FIG. 8c) as a first hole-blocking/electron-transport layer 653, a layer of tris-(8-hydroxyquinoline)aluminum (Alq; see FIG. 8d) as a first electron-transport/second light-emitting layer 655, a layer of 2,9-dimethyl-4,7-diphenyl-1,10-phenanthroline (BCP; see FIG. 8e) as a second hole-blocking/electron-transport layer 657, a layer of DCJTb (see FIG. 8f) doped with Alq

(Alq:DCJTB) as a second electron-transport/third light-emitting layer 659, a layer of tris-(8-hydroxyquinoline)aluminum (Alq; see FIG. 8d) as an electron-transport layer 73, and a layer of lithium fluoride and aluminum (LiF/Al) as an electron injection layer and an upper electrode 74, respectively. Wherein, the material of the hole-transport/first light-emitting layer 651 may emit blue light, the first electron-transport/second light-emitting layer 655 may emit green light, and the second electron-transport/third light-emitting layer 659 may emit red light. Furthermore, the glass transition temperature of the hole-transport/first light-emitting layer 651 is approximately 150° C., the glass transition temperature of the first hole-blocking/electron-transport layer 653 is approximately 70° C., the glass transition temperature of the first electron-transport/second light-emitting layer 655 is approximately 170° C., the glass transition temperature of the second hole-blocking/electron-transport layer 657 is approximately 80° C. Referring to FIG. 7, the device structure of the reconfigurable organic light-emitting device 2' of the present invention is illustrated, wherein the glass substrate 70 electroplated with ITO is the lower electrode, and a layer of PEDT:PSS with a thickness of 300 Å is deposited thereon as the hole injection layer 72; a layer of TATE with a thickness of 400 Å is then deposited on the hole injection layer 72 as the hole-transport/first light-emitting layer 651; a layer of TAZ with a thickness of 75 Å is subsequently deposited on the hole-transport/first light-emitting layer 651 as the first hole-blocking/electron-transport layer 653; a layer of Alq with a thickness of 75 Å is then deposited on the hole-blocking/electron-transport layer 653 as a first electron-transport/second light-emitting layer 655; a layer of BCP with a thickness of 100 Å is subsequently deposited on the first electron-transport/second light-emitting layer 655 as the second hole-blocking/electron-transport layer 657; a layer of Alq:DCJTB (2 wt. %) with a thickness of 150 Å is then deposited on the second hole-blocking/electron-transport layer 657 as the second electron-transport/third light-emitting layer 659; a layer of Alq with a thickness of 350 Å is subsequently deposited on the second electron-transport/third light-emitting layer 659 as the electron-transport layer 73; finally, a layer of lithium fluoride with a thickness of 5 Å and a layer of aluminum with a thickness of 1500 Å are sequentially deposited on the second electron-transport/third light-emitting layer 659 as the electron injection layer and the upper electrode 74, respectively.

[0073] Referring now to FIG. 9a, wherein the normalized intensity—wavelength characteristics diagram measured after applying a power of current density with approximately 25 mA/cm² on the reconfigurable organic light-emitting device 2' of the present invention is illustrated. As shown in the figure, the curve 901 as represented by solid circles illustrates the characteristic spectrum curve measured after the reconfigurable organic light-emitting device 2' of the present invention is fabricated, and before any conversion (heating) process. By observing the curve 901, one may easily find a peak of light-emitting intensity at the wavelength of approximately 480 nm. It is thus understood that the curve 901 represents the characteristic spectrum curve of the hole-transport/first light-emitting layer 651 that emits blue light. After heating the reconfigurable organic light-emitting device 2' by a temperature of 95° C. for 3 minutes, the characteristic spectrum of the reconfigurable organic light-emitting device 2' alters to curve 902 represented by hollow squares. By observing the curve 902, one may find

a light-emitting intensity peak at the wavelength of approximately 530 nm. It is thus understood that curve 902 represents the characteristic spectrum curve of the first electron-transport/second light-emitting layer 655 that emits green light. Furthermore, after heating the reconfigurable organic light-emitting device 2' by a temperature of 125° C. for 3 minutes, the characteristic spectrum of the reconfigurable organic light-emitting device 2' alters to curve 903 represented by solid triangles. By observing the curve 903, one may find a light-emitting intensity peak at the wavelength of approximately 610 nm. It is thus understood that curve 903 represents the characteristic spectrum curve of the second electron-transport/third light-emitting layer 659 that emits red light. Therefore, according to FIG. 9a, it is assured that the reconfigurable organic light-emitting device 2' of the present invention may indeed change the emission wavelength of its emitted light by means of a heating process. Referring next to FIG. 9b and FIG. 9c, wherein the characteristics of the measured current density—voltage and the light-emitting illuminance—voltage after applying a bias voltage of 0 volts to 17 volts on the reconfigurable organic light-emitting device 2' of the present invention are illustrated, respectively. Wherein, curve 904 and curve 907 as represented by solid circles illustrate the characteristics of the reconfigurable organic light-emitting device 2' of the present invention before any heating process, curve 905 and curve 908 as represented by hollow squares illustrate the characteristics of the reconfigurable organic light-emitting device 2' of the present invention after a heating process with a temperature of 95° C. is performed for 3 minutes, while curve 906 and curve 909 as represented by solid triangle illustrate the characteristics of the reconfigurable organic light-emitting device 2' of the present invention after a heating process with a temperature of 125° C. is performed for 3 minutes. As shown in FIG. 9b and FIG. 9c, the behavior of the characteristics of the reconfigurable organic light-emitting device 2' of the present invention remains in good quality regardless of before or after the heating process. Therefore, either before or after the heating process, the reconfigurable organic light-emitting device 2' of the present invention remains in a good operation state.

[0074] It should be understood, herein, that in two of the examples described above as having single or double high-energy-gap carrier-blocking layer, the materials used are selected as having certain carrier transport capability. In order to extend the tunable range for the light emitted from the organic light-emitting device, the materials in the organic light-emitting device may be doped with light-emitting dopant so as to emit light from the light-emitting dopant. Doping of the light-emitting dopant into the organic light-emitting material is well known to one skilled with the art. The description of the doping method is thus neglected.

[0075] In addition, two of the examples described above illustrate the reconfigurable organic light-emitting device of the present invention having a single high-energy-gap carrier-blocking layer and having double high-energy-gap carrier-blocking layers. It should be understood, however, that the reconfigurable organic light-emitting device may also have three or more layers of the high-energy-gap carrier-blocking layer so as to achieve the multi-color functionality via a single organic light-emitting device.

[0076] 2. Selective Heating Method for Structural Reconfiguration:

[0077] In accordance with the above, the heating method using heating sources and the heating method using a light-beam, for performing a localized heating process on the reconfigurable organic light-emitting device disclosed above, are further discussed in the following. The heating method using thermal heating further divides into the heating methods with built-in resistive heating and with external heating source.

[0078] (1) Heating Method with a Thermal Heating Source:

[0079] (a) Built-in Resistive Heating:

[0080] Referring now to FIG. 10, wherein an organic light-emitting device 3 having built-in resistive heating electrodes to perform the structural reconfiguration is illustrated. The so-called built-in resistive heating method fabricate a material layer with certain resistance on the same substrate of the light-emitting device, and by applying certain current on the resistance so as to perform the localized heating process for the device. In one embodiment (FIG. 10), the resistive heating electrode may also be one of the electrodes of the organic organic light emitting device. The structure as shown comprises a substrate 1010, a patterned lower electrode 1020 of the organic light-emitting device, a reconfigurable organic light-emitting structure 1030, a patterned upper electrode 1040 of the organic light-emitting device, and a heating current source 1000. As illustrated in FIG. 10, one may apply sufficient current to both ends of the patterned lower electrode 1020. The structure of the corresponding regions of the organic material may be reconfigured when the temperature of the patterned regions is sufficiently high. The structural reconfiguration process may be performed after the lower electrode 1020 and the reconfigurable organic light-emitting structure 1030 are fabricated and before the upper electrode 1040 is fabricated, or after the upper electrode 1040 is fabricated. If different amount of current is applied to different regions of the electrode lines, the heating temperature would be different so as to reconfigure different regions of the devices into different structures, producing emission of different colors (spectra). Therefore, by controlling the amount of heating current and the amount of time on the lower electrode 1020 of the device, one may achieve localized heating at different temperatures for different devices at different locations, and precisely control the light emission from different device regions.

[0081] Similarly, one may also apply a sufficient current to both ends of the patterned upper electrode lines, when the temperature of the patterned regions is sufficiently high, the structure of the regions of the organic material layer may be reconfigured. If different amount of current is applied to different regions of the electrode lines, the heating temperature would be different so as to encounter different degrees of heating, allowing different regions of the device to reconfigure into different structures, producing emission of different colors (spectra). Therefore, by controlling the amount of current and the amount of time on the upper electrode of the device, one may achieve localized heating at different temperatures for different devices at different locations, and precisely control the light emission from different device regions.

EXAMPLE

[0082] The reconfigurable organic light-emitting device 3 having built-in resistive heating electrodes may further be illustrated in an embodiment as shown in FIG. 11. The reconfigurable organic light-emitting device 3 comprising a heating power source 1000, a glass substrate 1010, a patterned lower electrode 1020 of a transparent ITO, a reconfigurable organic light-emitting layer 1030 and a patterned upper electrode 1040. The patterned lower electrode 1020 of transparent ITO is deposited on the glass substrate 1010, the reconfigurable light-emitting layer 1030 is deposited on the glass substrate 1010 and patterned lower electrode 1020 layer, and the patterned upper electrode 1040 is deposited on the reconfigurable organic light-emitting layer 1030. In this embodiment, the patterned lower electrode 1020 and the patterned upper electrode 1040 are formed in stripes, and the patterned lower electrode 1020 is arranged on the glass substrate 1010 perpendicular with the patterned upper electrode 1040. The overlap between the stripe of the vertically arranged patterned lower electrode 1020 overlaps with the stripe of the horizontally arranged patterned upper electrode 1040, in a top view, defines a working unit 1050 of the reconfigurable organic light-emitting device 3 having an built-in resistive heating electrode. In this embodiment, the area of the working unit 1050 is 1 mm² and each stripe of the vertically arranged lower electrode is separated by 1 mm from each other, while each stripe of the horizontally arranged upper electrode is also separated by 1 mm from each other. Moreover, the heating power source 1000 is connected to both ends of the patterned lower electrode 1020 to apply a current on lower electrode 1020 for heating. In this example, the reconfigurable organic light-emitting layer 1030 comprises all the layers between the upper electrode and the lower electrode of the reconfigurable organic light-emitting device 3 having two layers of high-energy gap carrier-blocking layers, in accordance with the embodiment as described in the preceeding example. In this example, the resistance of the patterned lower electrode 1020 having a transparent ITO layer is 30 Ω/□. In addition, the patterned upper electrode 1040 is selected from conductive materials such as aluminum, etc.

[0083] Meanwhile, by applying a bias voltage on the reconfigurable organic light-emitting device 3 having an built-in resistive heating electrode via the transparent patterned lower electrode 1020 and the patterned upper electrode 1040, the reconfigurable organic light-emitting device 3 having an built-in resistive heating electrode thus emits blue light. If a current density of 480 mA/cm is applied on both ends of the patterned transparent lower electrode 1020 for 3 minutes, the internal structure of the reconfigurable organic light-emitting layer 1030 is changed. If a bias voltage is applied on the changed device, the reconfigurable organic light-emitting device 3 emits green light. Moreover, if a current density of 560 mA/cm is applied on both ends of the transparent patterned lower electrode 1020 for 3 minutes, the internal structure of the reconfigurable organic light-emitting layer 1030 is changed. If a bias voltage is applied on the device, the reconfigurable organic light-emitting device 3 emits red light.

[0084] Referring now to FIG. 12a, wherein the normalized intensity—wavelength characteristics measured after applying a bias voltage of approximately 10 volts on the reconfigurable organic light-emitting device 3 of the present

invention is illustrated. As shown in the figure, the curve **1101** as represented by solid circles illustrates the characteristic spectrum curve measured after the reconfigurable organic light-emitting device **3** having an built-in resistive heating electrode of the present invention is fabricated, and before any conversion (heating) process. By observing the curve **1101**, one finds a peak at the wavelength of approximately 480 nm, thus the reconfigurable organic light-emitting device **3** having an built-in resistive heating electrode emits blue light. Then, heating the transparent patterned lower electrode **1020** by applying on both ends thereof a current density of 480 mA/cm for 3 minutes, the characteristic spectrum of the reconfigurable organic light-emitting device **3** alters to curve **1102** represented by hollow squares. By observing the curve **1102**, one finds a peak at the wavelength of approximately 530 nm. The curve **1102** represents the characteristic spectrum of green light. By continuing the heating process by applying a current density of 560 mA/cm on both ends of the transparent lower electrode **1020** for 3 minutes, the characteristic spectrum of the reconfigurable organic light-emitting device **3** alters to curve **1103** represented by solid triangles. By observing the curve **1103**, one finds a peak at the wavelength of approximately 610 nm. It is thus understood that curve **1103** represents the characteristic spectrum of red light. Therefore, according to **FIG. 12a**, it is assured that the reconfigurable organic light-emitting device **3** having built-in resistive heating electrodes, in this example, may indeed change the emission wavelength of its emitted light by means of a heating process.

[0085] Referring next to **FIG. 12b** and **FIG. 12c**, wherein the characteristics of the measured current density—voltage and the light-emitting brightness—voltage after applying a bias voltage of 0 volts to 10 volts on the reconfigurable organic light-emitting device **3** of the present invention are illustrated, respectively. Curve **1104** and curve **1107** as represented by solid circles illustrate the characteristics of the reconfigurable organic light-emitting device **3** having an built-in resistive heating electrode, in this example, before any heating process, curve **1105** and curve **1108** as represented by hollow squares illustrate the characteristics of the reconfigurable organic light-emitting device **3** having an built-in resistive heating electrode, in this example, after applying a current density of 480 mA/cm thereon for 3 minutes, while curve **1106** and curve **1109** as represented by solid triangle illustrate the characteristics of the reconfigurable organic light-emitting device **3** having an built-in resistive heating electrode, in this example, after applying a current density of 560 mA/cm thereon for 3 minutes. As shown in **FIG. 12b** and **FIG. 12c**, the behavior of the characteristics of the reconfigurable organic light-emitting device **3** having an built-in resistive heating electrode, in this example, remains in good conditions regardless of before or after the heating process. Therefore, either before or after the heating process, the reconfigurable organic light-emitting device **3** having an built-in resistive heating electrode, in this example, remains in a good operation state.

EXAMPLE

[0086] The reconfigurable organic light-emitting device **3** having built-in resistive heating electrodes, of the present invention, may also be designed into other embodiments such as further reducing the device dimension and the device separation. The resistance of the patterned lower electrode

1020 having a transparent ITO layer is $15\Omega/\square$, the width of the working unit **1050** is 80 μm , and each stripe of the vertically arranged lower electrode is separated by 12 μm from each other, all other features are the same as the previous example. Meanwhile, a bias voltage may be applied to the reconfigurable organic light-emitting device **3** having an built-in resistive heating electrode through the patterned lower electrode **1020** having a transparent ITO layer and the patterned upper electrode **1040**, the reconfigurable organic light-emitting device **3** having an built-in resistive heating electrode thus emits blue light. The patterned upper electrode **1040** is selected from conductive materials such as lithium fluoride or aluminum, etc. By applying a current density of 2375 mA/cm on both ends of the patterned lower electrode **1020** having a transparent ITO layer for 5 seconds, the internal structure of the reconfigurable organic light-emitting layer **1030** is changed. At this time, if a bias voltage is applied on the device, the reconfigurable organic light-emitting device **3** having built-in resistive heating electrode thus will emit green light. Moreover, if a current density of 3250 mA/cm is applied on both ends of the transparent patterned lower electrode **1020** for 5 seconds, the internal structure of the reconfigurable organic light-emitting layer **1030** is changed. At this time, if a bias voltage is applied on the device, the reconfigurable organic light-emitting device **3** having built-in resistive heating electrode will thus emit red light.

[0087] Referring now to **FIG. 13a**, wherein the normalized intensity—wavelength characteristics diagram measured after applying a bias voltage of approximately 10 volts on the reconfigurable organic light-emitting device **3** of the present invention is illustrated. As shown in the figure, the curve **1111** as represented by solid circles illustrates the characteristic spectrum curve measured after the reconfigurable organic light-emitting device **3** having an built-in resistive heating electrode of the present invention is fabricated, and before any conversion (heating) process. By observing the curve **1111**, one may easily find a peak of light-emitting intensity at the wavelength of approximately 480 nm, thus the reconfigurable organic light-emitting device **3** having an built-in resistive heating electrode emits blue light. Then, heating the transparent patterned lower electrode **1020** by applying on both ends thereof a current density of 2375 mA/cm for 5 seconds, the characteristic spectrum of the reconfigurable organic light-emitting device **3** alters to curve **1112** represented by hollow squares. By observing the curve **1112**, one may find a light-emitting intensity peaks at the wavelength of approximately 530 nm. It is thus understood that curve **1112** represents the characteristic spectrum that emits green light. By continuing the heating process by applying a current density of 3250 mA/cm on both ends of the transparent lower electrode **1020** for 5 seconds, the characteristic spectrum of the reconfigurable organic light-emitting device **3** alters to curve **1113** represented by solid triangles. By observing the curve **1113**, one may find a light-emitting intensity peaks at the wavelength of approximately 610 nm. It is thus understood that curve **1113** represents the characteristic spectrum curve that emits red light. Therefore, according to **FIG. 13a**, it is assured that the reconfigurable organic light-emitting device **3** having an built-in resistive heating electrode, in this example, may indeed change the emission wavelength of its emitted light by means of a heating process.

[0088] Referring next to FIG. 13b and FIG. 13c, wherein the characteristics of the measured current density—voltage and the light-emitting illuminance—voltage after applying a bias voltage of 0 volts to 10 volts on the reconfigurable organic light-emitting device 3, in this example, are illustrated, respectively. Wherein, curve 1114 and curve 1117 as represented by solid circles illustrate the characteristics of the reconfigurable organic light-emitting device 3 having an built-in resistive heating electrode, in this example, before any heating process, curve 1115 and curve 1118 as represented by hollow squares illustrate the characteristics of the reconfigurable organic light-emitting device 3 having an built-in resistive heating electrode, in this example, after applying a current density of 2375 mA/cm thereon for 5 seconds, while curve 1116 and curve 1119 as represented by solid triangle illustrate the characteristics of the reconfigurable organic light-emitting device 3 having an built-in resistive heating electrode, in this example, after applying a current density of 3250 mA/cm thereon for 5 seconds. As shown in FIG. 13b and FIG. 13c, the behavior of the characteristics of the reconfigurable organic light-emitting device 3 having an built-in resistive heating electrode, in this example, remains in good quality regardless of before or after the heating process. Therefore, either before or after the heating process, the reconfigurable organic light-emitting device 3 having an built-in resistive heating electrode, in this example, remains in a good operation state.

[0089] It should be appreciated that, in addition to the structure disclosed above and the description of the two examples, when the upper and lower electrodes of the light-emitting device are both of low resistance materials that are not easy to perform the heating process, one may fabricate another resist layer, still on the same substrate, for performing the heating process. As shown in FIG. 14, the device comprises a substrate 1120, a patterned resistive heating electrode 1130, an insulating buffer layer 1140, a lower electrode 1150 of the organic light emitting device, a reconfigurable organic light-emitting structure 1160, an upper electrode 1170 of the organic light emitting device, and a heating current source 1180. When a sufficient amount of current is applied on both ends of the patterned resistive material 1130, the temperature of the patterned region thus increases so as to reconfigure the structure of the region of the organic material layer. If various different amount of current is applied on different region of the resistive material, the heating temperature would also be different, thus different device regions may encounter different degrees of heating, allowing different regions of device to reconfigure into different structures, whereby the electric light-emitting spectra may be controlled. Therefore, by precisely controlling the amount of heating current and the amount of time applied thereon, one may perform the localized heating process for different devices at different temperatures, so as to precisely control the electric light emission for each device region.

[0090] (b) External Heating Source:

[0091] The patterned resistive heating electrode, for applying a current thereon and for performing the heating process of the reconfigurable organic light-emitting device 3 may also be deposited on a different substrate to form a reconfigurable organic light-emitting device with external heating source. Referring now to FIG. 15a and FIG. 15b, as shown in the figures, a reconfigurable organic light-emitting

device 3' with an external resistive heating source for performing the heating process is illustrated. The so-called external thermal sourcing method is to fabricate the heating electrodes and the light-emitting devices on different substrates (or support) wherein the heating electrodes may be a layer of resistive material. By tightly contacting the patterned resistive heating electrode with the device, and by applying certain amount of current to the patterned resistive material, the structure of the devices in selected areas may thus be changed. Some certain current may also be applied first to the patterned resistive material to increase the temperature, and to tune the device structure later by controlling the contact time between the resistive material and the device. It is appreciated that, in addition to a resistive material, the heating source may also be in other forms.

[0092] FIG. 15a illustrates the method for carrying out the localized heating process on the organic thin film, wherein the device comprises a substrate 1190, a lower electrode 1191 of the organic light-emitting device, a reconfigurable organic light-emitting structure 1192, a patterned layer of resistive material 1193, a substrate for the heating source 1194, and a heating power source 1195. FIG. 15b illustrates the fabricated device, in which an upper electrode 1196 is added to the organic light-emitting device compared to FIG. 15a. The fabrication procedure is like the following: fabricating the lower electrode 1191 of the device and the reconfigurable organic light-emitting structure 1192; tightly contacting one side of the resistive material layer with the top surface of the reconfigurable organic light-emitting structure 1192; generating heat by applying a current to the resistive material layer so as to locally heat the organic thin film and to reconfigure its structure; removing the resistive material substrate after reconfiguring the structure of the organic thin film; finally, depositing an upper electrode 1196 to form a completed device. One may also reconfigure the device via heating after the upper electrode 1196 is fabricated. Since the structure of the organic thin film in different regions may be different due to different heating temperatures, the emission spectra may thus be different. One may, therefore, perform localized heating process for different devices at different temperatures by precisely controlling the amount of current applied and the amount of heating time, so as to precisely alter the emission spectra for each device.

[0093] (2) Heating with a Light Beam:

[0094] In the following, the heating process performed on the reconfigurable organic light-emitting device by means of a light-beam is discussed.

[0095] To perform heating on the reconfigurable organic light-emitting device by shining a light beam, one should first include one layer of light-to-heat conversion layer with good absorption efficiency in the reconfigurable organic light-emitting device. In order to efficiently employ the light source to heat the reconfigurable device structure, the light-beam must be efficiently absorbed by the light-to-heat conversion layer and be converted into heat. It is thus very important to properly select the material of the light-to-heat conversion layer and the corresponding heating light source.

[0096] Since the light-to-heat conversion layer must be able to absorb infrared, visible, or ultraviolet light, the light-to-heat conversion layer thus could be selected from, for example, black absorbing materials, organic or inorganic dyes (including dyes for visible light, ultraviolet light,

infrared light, etc), pigments, metals, metal oxides, or other suitable materials. In one case, the light-to-heat conversion layer of the present invention is fabricated by vacuum or vapor depositing, such as metallic materials of, for example, cobalt, chromium, nickel, zinc, titanium, tin, molybdenum, tungsten, etc, or organic semiconducting materials of, for example, CuPC. In addition to the vacuum or vapor deposition fabrication process, the light-to-heat conversion layer may also be fabricated by employing a spin coating or solution casting method. The light-to-heat conversion layer may be placed in different locations of the device. For example, it could be outside the upper and lower electrodes of the device, or within the upper and lower electrodes of the device, i.e. within the structure of the organic light-emitting device, or the upper and lower electrodes themselves, depending on the device structure (upward emission or downward emission, normal or inverted device structures) or properties of the light-to-heat conversion layer (transparent or not, conductive or not).

[0097] FIG. 16a and FIG. 16b illustrates the structure and the structural reconfiguration process of the reconfigurable organic light-emitting device by shining a light-beam on a light-to-heat conversion layer to increase the temperature, which comprises a substrate 1240, a lower electrode 1241 of the organic light emitting device, a reconfigurable organic light-emitting structure 1242, an upper electrode 1243 of the organic light emitting device, a light-to-heat conversion layer 1244, a light source 1245 and a light-beam 1246. Since an extra light-to-heat conversion layer 1244 is added to the upper electrode 1243 of the organic light emitting device, the incident light-beam 1246 may thus be efficiently converted into heat for heating the device. One may adjust the intensity of the incident light-beam and the time and location of the light-beam so as to perform the heating process with different temperature at different locations. The devices (FIG. 16a) that originally have the same structure may thus be reconfigured into different structures via heating. The emission spectrum of the device is consequently changed (FIG. 16b).

EXAMPLE

[0098] Referring now to FIG. 17, a cross-sectional view of a reconfigurable organic light-emitting device 4 having a light-to-heat conversion layer is illustrated. The reconfigurable organic light-emitting device 4 having a light-to-heat conversion layer comprises a glass substrate 1200 coated with ITO as a lower electrode, a layer of polyethylene dioxythiophene/polystyrene sulphonate (PEDT:PSS; see FIG. 18a) with a thickness of 300 Å deposited on the glass substrate 1200 coated with ITO as a hole injection layer 1202, a layer of ter(9,9'-spirobifluorene) (T-Spiro; see FIG. 18b) with a thickness of 400 Å deposited on the hole injection layer 1202 as a hole-transport/first light-emitting layer 1211, a layer of 2,9-dimethyl-4,7-diphenyl-1,10-phenanthroline (BCP; see FIG. 18d) with a thickness of 75 Å deposited on the hole-transport/first light-emitting layer 1211 as a hole-blocking/electron-transport layer 1215, a layer of tris-(8-hydroxyquinoline)aluminum (Alq; see FIG. 18c) with a thickness of 600 Å deposited on the hole-blocking/electron-transport layer 1215 as an electron-transport/second light-emitting layer 1219, a layer of lithium fluoride with a thickness of 5 Å and a layer of aluminum with a thickness of 1500 Å (LiF/Al) deposited on the electron-transport/second light-emitting layer 1219 as an

electron injection layer and an upper electrode 1204, respectively. Finally, a layer of chromium (Cr) with a thickness of 300 Å deposited on the electron injection layer and the upper electrode 1204 as a light-to-heat conversion layer 1206. The glass transition temperatures of the hole-transport/first light-emitting layer 1211, the hole-blocking/electron-transport layer 1215 and the electron-transport/second light-emitting layer 1219 are 237° C., 80° C. and 170° C., respectively.

[0099] Applying now a bias voltage of about 10 volts on the reconfigurable organic light-emitting device 4 in this example, the reconfigurable organic light-emitting device 4 having a light-to-heat conversion layer then emits blue light. Next shining the heating light-beam 1246 emitted from the heating light source 1245 on the light-to-heat conversion layer 1206 for 3 seconds so as to perform the heating process on the reconfigurable organic light-emitting device 4 having a light-to-heat conversion layer. In this example, the heating light source 1245 is an Nd:YAG laser, while the wavelength of the heating light-beam is 1024 nm and the power density of the heating light-beam is 1100 mW/mm². Meanwhile, the heated reconfigurable organic light-emitting device 4 having a light-to-heat conversion layer emits green light. Referring now to FIG. 19, wherein the normalized intensity—wavelength characteristics measured after applying a bias voltage of approximately 10 volts on the reconfigurable organic light-emitting device 4 having a light-to-heat conversion layer is illustrated. As shown in the figure, curve 1401 as represented by solid circles illustrates the characteristic spectrum measured after the reconfigurable organic light-emitting device 4 having a light-to-heat conversion layer of the present invention is fabricated, and before any conversion (heating) process, while curve 1402 as represented by solid squares illustrates the characteristic spectrum measured after the reconfigurable organic light-emitting device 4 having a light-to-heat conversion layer of the present invention is fabricated and the heating light-beam 1246 shined thereon for 3 seconds. By observing the curve 1401 and the curve 1402, one finds a peak of light-emitting intensity at the wavelength of approximately 430 nm for curve 1401 and at 540 nm for curve 1402. Thus the reconfigurable organic light-emitting device 4 having a light-to-heat conversion layer emits blue light before shining the heating light-beam thereon and emits green light after the heating beam has been shined thereon.

[0100] 3. Applications in Multi-color or Full-Color Display:

[0101] By using the selective heating method of the reconfigurable organic light-emitting structure, a multi-color or full-color organic light emitting display may be fabricated. The following discussion is sequentially divided into three parts: fixed-pattern display apparatus, passive-matrix multi-color or full-color display apparatus, and active-matrix multi-color or full-color display apparatus.

[0102] (1) Fixed-Pattern Display Apparatus:

[0103] Referring to FIG. 20, wherein a fixed-pattern display apparatus 5 employing the reconfigurable organic light-emitting device is illustrated. The fixed-pattern display apparatus 5 comprises a substrate 1501, a lower electrode 1503, a reconfigurable organic light-emitting layer 1505, and a patterned heating unit 1509. In this embodiment, the patterned heating unit 1509 is in contact with the reconfigurable organic light-emitting layer 1505. Heating the recon-

figurable organic light-emitting layer **1505** with the patterned heating unit **1509**, a plurality of heated regions **1507** are thus formed. Now, applying a bias voltage of approximately 2 volts to 15 volts on the lower electrode **1503** and the upper electrode (not shown) of the reconfigurable organic light-emitting layer **1505**, the plurality of heated regions may thus emit lights with different spectra from other areas. This makes a fixed-pattern display.

[**0104**] Referring to **FIG. 21**, wherein another fixed-pattern display apparatus **6** of the present invention employing the reconfigurable organic light-emitting device is illustrated. The fixed-pattern display apparatus **6** comprises a substrate **1601**, a lower electrode **1603**, a reconfigurable organic light-emitting layer **1605**, an upper electrode **1607**, a light-to-heat conversion layer **1609**, a light source **1603** and a light-beam **1615**. By shining the light-beam **1615** emitted from the light source **1613** on the light-to-heat conversion layer **1609**, the localized heating process may be performed on the light-to-heat conversion layer **1609**. Meanwhile, a plurality of heated regions **1611** may be formed on the light-to-heat conversion layer **1609** by moving the light source **1613**. The plurality of heated regions **1611** have the structure of the reconfigurable organic light emitting layer **1605** changed. Therefore, when applying a bias voltage of approximately 5 volts on the lower electrode **1603** and the upper electrode **1607** of the reconfigurable organic light-emitting layer **1605**, the reconfigurable organic light-emitting layer **1605** emits lights with the patterns of heated regions **1611**.

[**0105**] In this embodiment, the location of the light-to-heat conversion layer is only one example of possible locations. For other embodiments, the light-to-heat conversion layer may be fabricated at other locations, for example, above the upper electrode, beneath the lower electrode, within the structure of the reconfigurable organic light-emitting layer, or the upper and lower electrodes themselves, etc. It should be appreciated, therefore, the location of the light-to-heat conversion layer in this embodiment is not for limiting the possible locations but for illustrative purposes only.

[**0106**] (2) Passive-Matrix Multi-Color/Full-Color Display Apparatus:

[**0107**] Referring to **FIG. 22a** to **22d**, the fabrication steps for a passive-matrix multi-color or full-color display apparatus employing the reconfigurable organic light-emitting device is illustrated. The passive-matrix display apparatus employs the built-in resistive heating. As shown in **FIG. 22a**, in order to employ the reconfigurable organic light-emitting device for fabricating the full- or multi-color passive-matrix display apparatus, a substrate **1701** is provided. The lower electrode **1703** is formed as shown in **FIG. 22a** by depositing a layer of lower electrode on the substrate by means of vacuum deposition, for example, and patterning the lower electrode by photolithography technique and the dry and/or wet etching process,

[**0108**] Next, as shown in **FIG. 22b**, a patterned insulating structure on a portion of the substrate **1701** and above the lower electrode **1703** is fabricated by first deposition with vacuum deposition or spin coating, and the patterning the insulating layer by photolithography and dry and/or wet etching process, as shown in **FIG. 22b**. Then, an upper electrode separation layer is fabricated by vacuum deposi-

tion, for example, above the patterned insulating layer **1705**, and by patterning the separation layer by photolithography and dry and/or wet etching process, as shown in **FIG. 22b**.

[**0109**] Next, as shown in **FIG. 22c**, a layer of reconfigurable organic light-emitting layer **1709** and a layer of upper electrode **1711** are fabricated by vacuum deposition, for example, on the structure as shown in **FIG. 22b**. Finally, as shown in **FIG. 22d**, by connecting the lower electrode **1703** with a heating power source **1713**, the full- or multi-color passive-matrix display apparatus **7** is fabricated. In this particular embodiment, the lower electrode **1703** is also the built-in resistive heating electrodes.

[**0110**] Now, referring to **FIG. 23a** to **FIG. 23f**, wherein the steps for fabricating a full-color or multi-color passive-matrix display apparatus employing the reconfigurable organic light-emitting device is illustrated. The heating method of an extra heating electrode is adopted for this passive-matrix display apparatus. As shown in **FIG. 23a**, in order to employ the reconfigurable organic light-emitting device for fabricating the full or multi-color passive-matrix display apparatus, a substrate **1801** is provided. By fabricating a resist layer on the substrate by means of vacuum deposition or spin coating, and patterning the resist layer by means of photolithography technique accompanying with the dry and/or wet etching processes, the patterned resist **1803** is then formed, as shown in **FIG. 23a**.

[**0111**] Next, as shown in **FIG. 23b**, fabricating a first insulating layer **1805** on a portion of the substrate **1801** and above the patterned resist **1803** by vacuum deposition, for example. Then, fabricating a layer lower electrode on the first insulating layer **1805**, and patterning the lower electrode layer by photolithography technique accompanying the dry and/or wet etching process, the patterned lower electrode layer **1807** is thus formed, as shown in **FIG. 23c**. Then, by fabricating a second insulating layer on a portion of the first insulating layer **1805** and the patterned lower electrode **1807** by vacuum deposition, for example, and patterning the second insulating layer by photolithography technique accompanying the dry and/or wet etching processes, the patterned second insulating layer **1809** is thus formed, as shown in **FIG. 23d**. Moreover, an upper electrode separation layer is also fabricated, by vacuum deposition for example, above the second insulating layer **1809**, and the upper electrode separation layer is patterned by photolithography technique accompanying dry and/or wet etching, the upper electrode isolating island **1811** are thus formed as shown in **FIG. 23d**.

[**0112**] Next, as shown in **FIG. 23e**, a layer of reconfigurable organic light-emitting layer **1813** and a layer of upper electrode **1815** are fabricated by means of vacuum deposition, for example, above the structure as shown in **FIG. 23b**. Finally, as shown in **FIG. 23f**, the patterned resist **1803** is connected with a heating power source **1817**, the full or multi-color passive-matrix display apparatus **8** is thus fabricated.

[**0113**] Now, referring to **FIG. 24a** to **FIG. 24d**, wherein the steps for fabricating a full or multi-color passive-matrix display apparatus employing the reconfigurable organic light-emitting device is illustrated. The heating method of a light-beam is adopted for this passive-matrix display apparatus. As shown in **FIG. 24a**, in order to employ the reconfigurable organic light-emitting device for fabricating

the full or multi-color passive-matrix display apparatus, a substrate **1801** is provided. By fabricating a lower electrode layer on the substrate by means of vacuum deposition, for example, and patterning the lower electrode layer by means of photolithography technique accompanying with the dry and/or wet etching processes, the lower electrode **1903** is then formed, as shown in **FIG. 24a**.

[0114] Next, as shown in **FIG. 24b**, by fabricating an insulating layer on a portion of the substrate **1901** and above the lower electrode **1903** by vacuum deposition or by spin coating, and patterning the insulating layer by photolithography technique accompanying the dry and/or wet etching processes, the patterned insulating layer **1905** is thus formed, as shown in **FIG. 24b**. Then, by fabricating an upper separation layer by vacuum deposition, for example, above the patterned insulating layer **1905**, and patterning the upper separation layer by photolithography technique accompanying the dry and/or wet etching process, the upper electrode isolating islands **1907** are thus formed, as shown in **FIG. 24b**.

[0115] Next, as shown in **FIG. 24c**, a layer of reconfigurable organic light-emitting layer **1909**, a layer of upper electrode **1911**, and a layer of light-to-heat conversion layer **1913** are fabricated by vacuum deposition, for example, on the structure as shown in **FIG. 24b**. Finally, by moving the light-beam **1917** emitted from the light source **1915** to shine on each pixel **1919** of the light-to-heat conversion layer **1913**, the structure corresponding to each pixel **1919** of the reconfigurable organic light-emitting layer **1909** is thus changed. Therefore, when a bias voltage of approximately 10 volts is applied on the lower electrode **1903** and the upper electrode **1911** of the reconfigurable organic light-emitting layer **1909**, the reconfigurable organic light-emitting thus emits lights corresponding to their particular spectra, the pattern is thus displayed. This completes the fabrication of a full or multi-color passive-matrix display apparatus **9**. In this embodiment, an auxiliary electrode, disclosed in the Republic of China Patent No. 52535, may be added at a side of the upper electrode and the lower electrode for enhancing the side conduction capability.

[0116] In this embodiment, the location of the light-to-heat conversion layer is only an example of possible locations. For other particular embodiments, the light-to-heat conversion layer may be fabricated at other locations, for example, above the upper electrode, beneath the lower electrode, within the structure of the reconfigurable organic light-emitting layer, or the upper and lower electrodes themselves, etc. Therefore, it is appreciated that the location of the light-to-heat conversion layer in this embodiment is not for limiting the possible locations but for illustrative purposes only.

[0117] In summary, the full-color or multi-color passive-matrix display apparatus of the present invention not only avoids the limitation of device size and display resolution of the shadow mask method, but also reduces the fabrication steps. Also, the consumption of material may be largely reduced and the yield may be enhanced.

[0118] (3) Active-Matrix Multi-Color/Full-Color Display Apparatus:

[0119] Referring to **FIG. 25**, the cross-sectional view of the full-color or multi-color active-matrix display apparatus

20 employing the reconfigurable organic light-emitting device is illustrated. The heating method using built-in resistive heating electrode is adopted in this active-matrix display apparatus **20**. The active-matrix display apparatus **20** comprises a substrate **2001**, a first insulating layer **2003**, a second insulating layer **2005**, a third insulating layer **2007**, a resistive layer **2009**, a fourth insulating layer **2011**, a lower electrode **2013**, a fifth insulating layer **2015**, a reconfigurable organic light-emitting layer **2017**, an upper electrode and a transistor circuit **2030**. The transistor circuit is a field effect transistor circuit, which further comprises a source **2031**, a channel **2032**, a gate **2033**, a drain **2034**, a driving line **2035** and a data line **2036**. As shown in the figure, the gate **2033** is disposed on the substrate **2001**; the first insulating layer **2003** is disposed on the substrate **2001** and the gate **2033**; the source **2031**, the channel **2032**, and the drain **2034** are disposed respectively above the first insulating layer **2003** corresponding to the gate **2033**; the second insulating layer **2005** is disposed above the first insulating layer **2003**, the source **2031**, the channel **2032** and the drain **2034**; the data line **2036** and the driving line **2035** are disposed on the second insulating layer **2005**, and the driving line **2035** and the drain **2034** are electrically connected; the third insulating layer **2007** is disposed above the data line **2036**, the driving line **2035**, and the second insulating layer; the resistive layer **2009** is deposited on the third insulating layer **2007**; the fourth insulating layer **2011** is disposed on the resistive layer **2009** and on the exposed portion of the third insulating layer **2007** not covered by the resistive layer **2009**; the lower electrode **2013** is deposited on the fourth insulating layer **2011** at a location corresponding to the resistive layer **2009**, and the lower electrode **2013** having a protruding portion **2014** which penetrates through the fourth insulating layer **2011**, the third insulating layer **2007** and the second insulating layer **2005** and is electrically connected with the source **2031**; the fifth insulating layer **2015** is disposed on the fourth insulating layer **2011**, covering a portion of the lower electrode **2013**; the reconfigurable organic light-emitting layer **2017** is deposited on the lower electrode **2013** and the fifth insulating layer **2015**; finally, the upper electrode **2019** is deposited on the reconfigurable organic light-emitting layer. As such, the fabrication of the active-matrix display apparatus **20** incorporating built-in resistive heating electrodes is completed. It is noted that the transistor circuit **2030** of the present embodiment is integrated into the active-matrix multi-color/full-color display apparatus. Furthermore, the transistor circuit **2030** may be an N channel or a P channel field effect transistor circuit.

[0120] Referring now to **FIG. 26**, wherein the relative spatial arrangement of the active-matrix display apparatus **20** as shown in **FIG. 25** is illustrated. The bias voltage applied on the upper electrode **2019** and the lower electrode **2013**, shown in **FIG. 25**, is controlled by the transistor circuit **2030**, so as to determine whether the effective light-emitting area **2110** emits light or not. Moreover, a certain current may be applied on the resistive layer **2009** via the heating power source **2100** to perform heating and structural reconfiguration of the reconfigurable OLED and to control the emission spectrum of the effective light-emitting region **2110**.

[0121] Now, referring to **FIG. 27**, wherein the cross-sectional view of the full or multi-color active-matrix display apparatus **22** employing the reconfigurable organic light-emitting device is illustrated. The heating with a light-

beam is adopted in this active-matrix display apparatus 22. The active-matrix display apparatus 22 comprises a substrate 2201, a first insulating layer 2203, a second insulating layer 2205, a third insulating layer 2207, a lower electrode 2209, a fourth insulating layer 2211, a reconfigurable organic light-emitting structure 2213, an upper electrode 2215, a light-to-heat conversion layer 2217 and a transistor circuit 2230. The transistor circuit 2230 further comprises a source 2231, a channel 2232, a channel 2233, a drain 2234, a driving line 2235 and a data line 2236. As shown in the figure, the channel 2233 is disposed on the substrate 2201; the first insulating layer 2203 is disposed on the substrate and the channel 2233; the source 2231, the channel 2232 and the drain 2234 are disposed on their respective location on the first insulating layer 2203 corresponding to the location of the channel 2233; the second insulating layer 2205 is disposed on the first insulating layer 2203, and above the source 2231, the channel 2232 and the drain 2234; the data line 2236 and the driving line 2235 are disposed on the second insulating layer 2205, while the driving line 2235 and the drain 2234 are electrically connected with each other; the third insulating layer 2207 is disposed above the data line 2236, the driving line 2235 and the second insulating layer 2205; the lower electrode 2209 is deposited on the third insulating layer 2207, and the lower electrode 2209 having a protruding portion 2214, penetrating through the third insulating layer 2207 and the second insulating layer 2205, and electrically connecting with the source 2231; the fourth insulating layer 2211 is disposed on the third insulating layer covering a portion of the lower electrode 2209; the reconfigurable organic light-emitting layer 2213 is disposed on the lower electrode 2209 and the fourth insulating layer 2211; the upper electrode 2215 is deposited on the reconfigurable organic light-emitting layer 2213; finally, a light-to-heat conversion layer is disposed on the upper electrode 2215. By shining the light-beam 2221 emitted from the light source 2219 on the light-to-heat conversion layer 2217, the reconfigurable organic light-emitting layer 2213 may be heated so as to control its emission spectrum. Moreover, the bias voltage applied on the upper electrode 2215 and the lower electrode 2209 may be controlled by using the transistor circuit 2230, so as to determine whether the effective reconfigurable light-emitting layer 2213 emits light or not. As such, the fabrication of an active-matrix display apparatus 20 by employing the heating process of a light-beam is thus completed. It is noted that the transistor circuit 2230 of the present embodiment is integrated into the active-matrix multi-color/full-color display apparatus. Besides, the transistor circuit 2230 may be an N channel or a P channel field effect transistor circuit. Furthermore, the location of the light-to-heat conversion layer 2217 is not limited to be above the upper electrode 2215, it may also be located, for example, beneath the upper electrode 2215, above the lower electrode 2209 or beneath the lower electrode 2209, etc.

[0122] What is disclosed above is only the preferred embodiments of the present invention. The scope of the present invention is thus not limited to the above. The technical content of the present invention is defined, in its broadest sense, in the following claims. Any alternation or modification exactly the same or equivalent to the following claims by one of ordinarily skilled in the art is considered to be within the spirit and scope of the present invention.

What is claimed is:

1. A reconfigurable organic light-emitting device, comprising:

at least two organic light-emitting layers; and

at least one high-energy-gap carrier-blocking layer, formed between each of the organic light-emitting layers; wherein the organic light-emitting layers and the high-energy gap carrier-blocking layer can be heated to induce the inter-diffusion process, so as to change the structure of the reconfigurable organic light-emitting device to emit light of different spectra.

2. The organic light-emitting device as recited in claim 1, further comprising an upper electrode and a lower electrode sandwiching the organic light-emitting layers and the high-energy-gap carrier-blocking layer. By applying a bias voltage thereon, the reconfigurable organic light-emitting device may emit lights.

3. The organic light-emitting device as recited in claim 2, further comprising a light-to-heat conversion layer, wherein by shining a light-beam thereon, the reconfigurable organic light-emitting device may be heated.

4. The organic light-emitting device as recited in claim 2, further comprising a built-in resistive heating electrode, wherein by applying a current thereon, the reconfigurable organic light-emitting device may be heated.

5. The organic light-emitting device as recited in claim 2, further comprising an external heating source.

6. The organic light-emitting device as recited in claim 5, wherein the external heating source is a patterned resistive heating electrode, wherein by applying a current thereon, the reconfigurable organic light-emitting device may be heated.

7. The organic light-emitting device as recited in claim 4, wherein the built-in resistive heating electrode is a patterned resistive conductor.

8. The organic light-emitting device as recited in claim 3, wherein the light-beam is a laser beam.

9. The organic light-emitting device as recited in claim 1, wherein each of the high-energy-gap carrier-blocking layer has a different glass transition temperature, and the glass transition temperatures of the high-energy-gap carrier-blocking layer are smaller than the glass transition temperatures of the organic light-emitting layers.

10. The organic light-emitting device as recited in claim 1, wherein the emission spectrum of the reconfigurable organic light-emitting device is one of the characteristic spectra of the at least two organic light-emitting layers, and when the structure of the reconfigurable organic light-emitting device is changed, the emission spectrum of the reconfigurable organic light-emitting device changes from the characteristic spectrum of one layer of the at least two organic light-emitting layers to that of another layer of the at least two organic light-emitting layers.

11. A display apparatus employing the organic light-emitting device, comprising:

a lower electrode;

a layers of the reconfigurable light-emitting device formed on the lower electrode: and

an upper electrode formed on the layer of the reconfigurable light-emitting device; the structure of the reconfigurable organic light-emitting layer being locally reconfigured via a patterned heating source, and by

applying a bias voltage between the upper electrode and the lower electrode, light of different spectra being emitted.

12. The display apparatus as recited in claim 11, wherein the layers of the reconfigurable organic light-emitting device further comprises:

at least two organic light-emitting layers; and

at least one high-energy-gap carrier-blocking layer, formed between each of the organic light-emitting layers.

13. The display apparatus as recited in claim 12, wherein each of the high-energy-gap carrier-blocking layer has a different glass transition temperature, and the glass transition temperatures of the high-energy-gap carrier-blocking layers are smaller than the glass transition temperatures of the organic light-emitting layers.

14. The display apparatus as recited in claim 12, wherein the emission spectrum of the reconfigurable organic light-emitting device is one of the characteristic spectra of the at least two organic light-emitting layers, and the emission spectrum of reconfigurable organic light-emitting is changed from the characteristic spectrum of one layer of the at least two organic light-emitting layers to another layer of the at least two organic light-emitting layers when the reconfigurable organic light-emitting device changes its structure.

15. The display apparatus as recited in claim 11, further comprising a light-to-heat conversion layer, wherein by shining a light-beam thereon, the reconfigurable organic light-emitting device may be heated.

16. The display apparatus as recited in claim 11, further comprising an external heating source, by which the reconfigurable organic light-emitting device may be heated.

17. The display apparatus as recited in claim 11, further comprising a built-in resistive heating electrode, wherein by applying a current thereon, the reconfigurable organic light-emitting device may be heated.

18. The display apparatus as recited in claim 17, wherein the lower electrode may be used on the built-in resistive heating electrode

19. The display apparatus as recited in claim 11, wherein the bias voltage applied between the upper electrode and the lower electrode is within the range of 2 volts to 15 volts.

20. A display apparatus employing the organic light-emitting device, comprising:

a substrate;

a lower electrode formed on the substrate;

an insulating layer formed on the lower electrode;

an upper electrode separating island formed on the insulating layer,

a layer of reconfigurable organic light-emitting device formed on the lower electrode, the insulating layer, and the upper electrode separating island; and

an upper electrode formed on the layer of the reconfigurable organic light-emitting device; wherein the structure of the layer of the reconfigurable organic light-emitting device can be reconfigured via a patterned heating source, and by applying a bias voltage between the upper electrode and the lower electrode, light of different spectra can be emitted.

21. The display apparatus as recited in claim 20, wherein the layer of the reconfigurable organic light-emitting device further comprises:

at least two organic light-emitting layers; and

at least one high-energy gap carrier-blocking layer, formed between each of the organic light-emitting layers.

22. The display apparatus as recited in claim 21, wherein each of the high-energy-gap carrier-blocking layer has a different glass transition temperature, and the glass transition temperatures of the high-energy-gap carrier-blocking layers are smaller than the glass transition temperatures of the organic light-emitting layers.

23. The display apparatus as recited in claim 21, wherein the emission spectrum of the reconfigurable organic light-emitting device is one of the characteristic spectra of the at least two organic light-emitting layers, and the emission spectrum of reconfigurable organic light-emitting is changed from the characteristic spectrum of one layer of the at least two organic light-emitting layers to that of another layer of the at least two organic light-emitting layers when the reconfigurable organic light-emitting device changes its structure.

24. The display apparatus as recited in claim 20, further comprising a light-to-heat conversion layer, wherein by shining a light-beam thereon, the reconfigurable organic light-emitting device may be heated.

25. The display apparatus as recited in claim 24, wherein the light-beam is a laser beam.

26. The display apparatus as recited in claim 24, wherein the light-to-heat conversion layer is any one of the upper electrode and the lower electrode.

27. The display apparatus as recited in claim 24, wherein the light-to-heat conversion layer is formed outside of the upper electrode and the lower electrode.

28. The display apparatus as recited in claim 24, wherein the light-to-heat conversion layer is formed between the upper electrode and the lower electrode.

29. The display apparatus as recited in claim 20, further comprising a built-in resistive heating electrode, wherein by applying a current thereon, the reconfigurable organic light-emitting device may be heated.

30. The display apparatus as recited in claim 29, wherein the built-in resistive heating electrode is a layer of patterned resistive conductor.

31. The display apparatus as recited in claim 30, wherein the layer of patterned resistive conductor is any one of the upper electrode and the lower electrode.

32. The display apparatus as recited in claim 30, wherein the layer of patterned resistive conductor is formed outside of the upper electrode and the lower electrode.

33. The display apparatus as recited in claim 24, further comprising an external heating source.

34. The display apparatus of claim 33, wherein the external heating source is a layer of patterned resistive conductor, wherein by applying a current thereon, the reconfigurable organic light-emitting device may be heated.

35. The display apparatus as recited in claim 20, wherein the upper electrode and the lower electrode by vertically cross each other.

36. A display apparatus employing the organic light-emitting device, comprising:

a substrate;

a lower electrode formed on the substrate;
 an insulating layer formed on the lower electrode;
 a layer of reconfigurable organic light-emitting device formed on the lower electrode and the insulating layer;
 an upper electrode formed on the layer of the reconfigurable organic light-emitting device; and
 a transistor circuit electrically connected with the upper electrode and the lower electrode; wherein the structure of the layer of the reconfigurable organic light-emitting device is reconfigured via a patterned heating source, and by applying a bias voltage between the upper electrode and the lower electrode, controlled by the transistor circuit, light of different spectra is emitted.

37. The display apparatus as recited in claim 36, wherein the layer of the reconfigurable organic light-emitting device further comprising:

- at least two organic light-emitting layers; and
- at least one high-energy-gap carrier-blocking layer, formed between each of the organic light-emitting layer.

38. The display apparatus as recited in claim 37, wherein each of the high-energy-gap carrier-blocking layer has a different glass transition temperature, and the glass transition temperatures of the high-energy-gap carrier-blocking layers are smaller than the glass transition temperatures of the organic light-emitting layers.

39. The display apparatus as recited in claim 37, wherein the emission spectrum of the reconfigurable organic light-emitting device is one of the characteristic spectra of the at least two organic light-emitting layers, and the emission spectrum of reconfigurable organic light-emitting is changed from the characteristic spectrum of one layer of the at least two organic light-emitting layers to that of another layer of

the at least two organic light-emitting layers when the reconfigurable organic light-emitting device changes its structure.

40. The display apparatus as recited in claim 37, further comprising a light-to-heat conversion layer, wherein by shining a light-beam thereon, the reconfigurable organic light-emitting device may be heated.

41. The display apparatus as recited in claim 40, wherein the light-beam is a laser beam.

42. The display apparatus as recited in claim 40, wherein the light-to-heat conversion layer is any one of the upper electrode and the lower electrode.

43. The display apparatus as recited in claim 40, wherein the light-to-heat conversion layer is formed outside of the upper electrode and the lower electrode.

44. The display apparatus as recited in claim 40, wherein the light-to-heat conversion layer is formed between the upper electrode and the lower electrode.

45. The display apparatus as recited in claim 37, further comprising a built-in resistive heating electrode, wherein by applying a current thereon, the reconfigurable organic light-emitting device may be heated.

46. The display apparatus as recited in claim 37, wherein the built-in resistive heating electrode is a layer of patterned resistive conductor.

47. The display apparatus as recited in claim 46, wherein the layer of patterned resistive conductor is outside of the lower electrode.

48. The display apparatus as recited in claim 37, further comprising an external heating source.

49. The display apparatus of claim 48, wherein the external heating source is a layer of patterned resistive conductor, wherein by applying a current thereon, the reconfigurable organic light-emitting device may be heated.

* * * * *

专利名称(译)	可重构的有机发光装置和采用该装置的显示装置		
公开(公告)号	US20050040392A1	公开(公告)日	2005-02-24
申请号	US10/642745	申请日	2003-08-19
[标]申请(专利权)人(译)	吴忠帆 陈介韦 CHO停役		
申请(专利权)人(译)	胡忠-CHIH 陈界韦 CHO寿-YI		
当前申请(专利权)人(译)	国立台湾大学		
[标]发明人	WU CHUNG CHIH CHEN CHIEH WEI CHO TING YI		
发明人	WU, CHUNG-CHIH CHEN, CHIEH-WEI CHO, TING-YI		
IPC分类号	H01L27/32 H01L35/24 H01L51/50 H01L51/52		
CPC分类号	H01L27/3211 H01L51/529 H01L51/5096 H01L51/5036		
其他公开文献	US7180089		
外部链接	Espacenet USPTO		

摘要(译)

一种可重构的有机发光装置和采用这种有机发光装置的显示装置，其中所述可重构的有机发光装置包括至少两个有机发光层和至少一个高能隙的载流子阻挡层。至少一个高能隙载流子阻挡层形成在每个有机发光层之间。可重构的有机发光装置的结构可以通过加热来重新配置，并且可重构的有机发光装置因此可以在施加偏压之后发射至少两个有机发光层中的一层的光的特性。可重构有机发光装置的上电极和下电极。可以使用内置电阻加热源，外部加热源或光束进行加热。通过采用可重构的有机发光装置，可以进一步制造多色或全色的固定图案，无源矩阵和有源矩阵显示装置。

